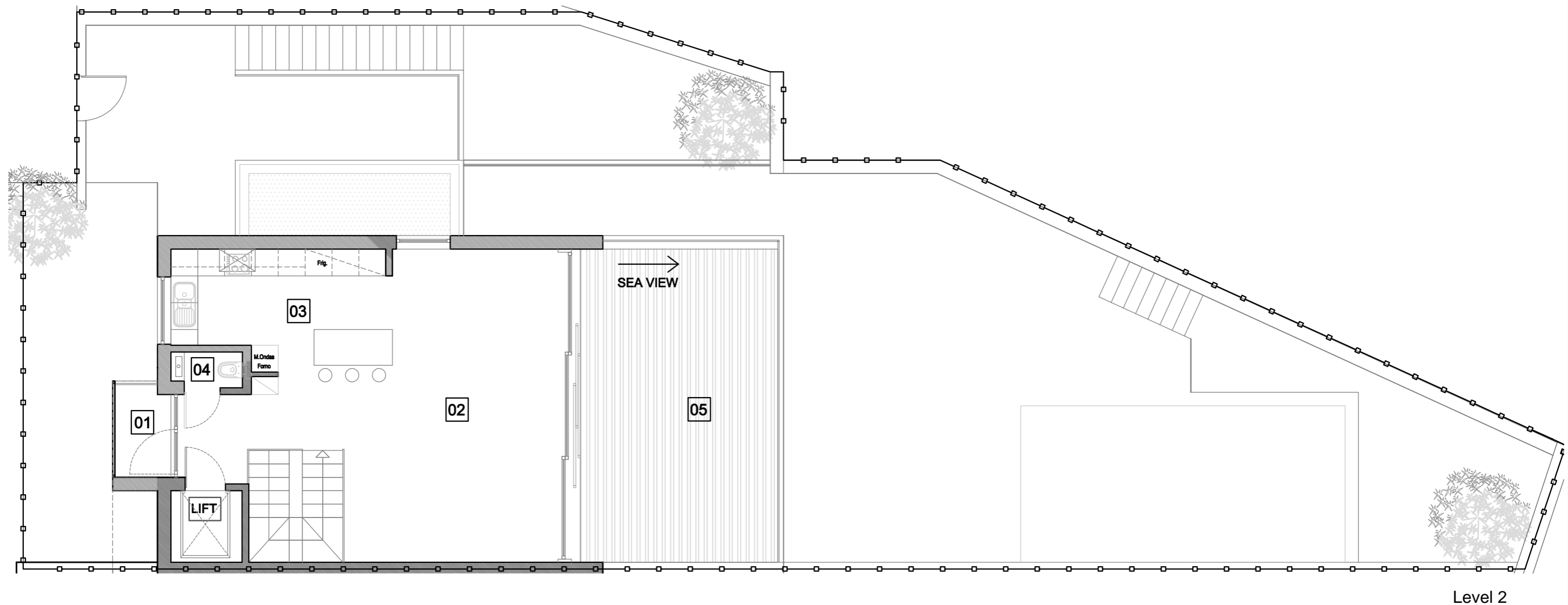


# Edificio 1: Villa A

## MASTERPLAN



Edificio 1



Level 2

heights II  
PERALTA

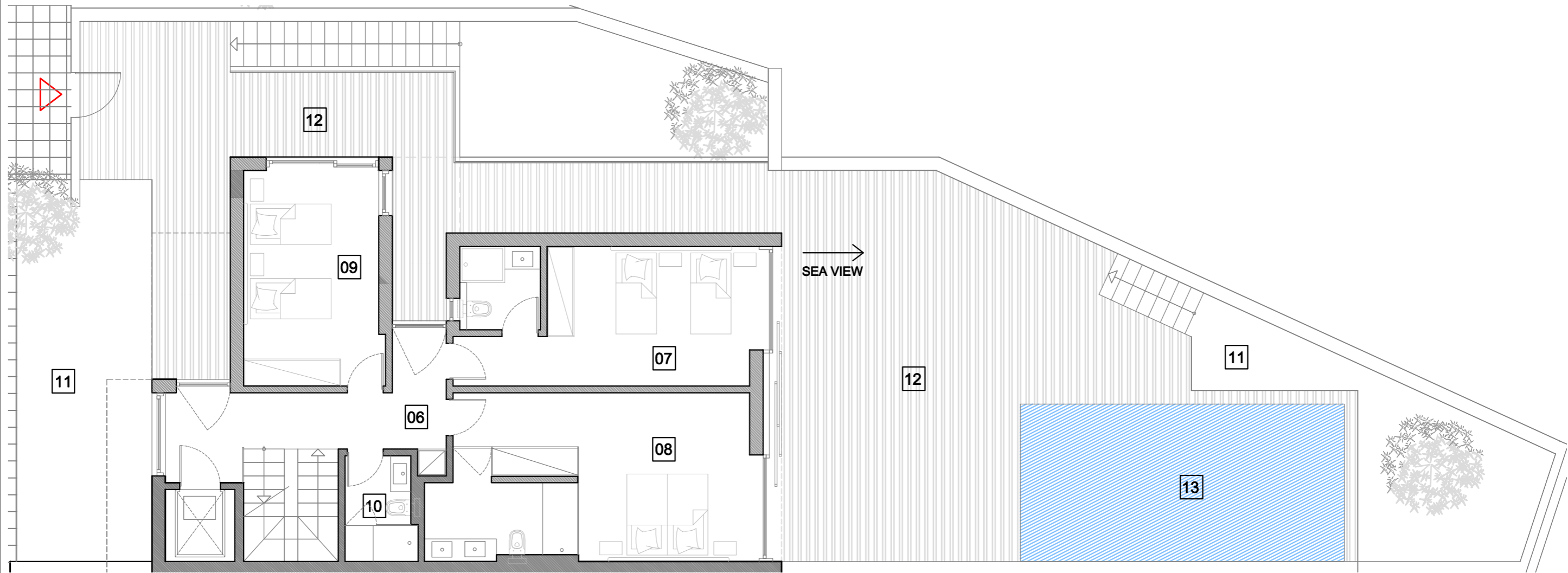
01	Balcony	4,7 m2	08	Bedroom/Ensuite	26.1 m2	15	Garage	69 m2
02	Living Room	42.2 m2	09	Bedroom	14.5 m2	16	Bedroom/Ensuite	27.4 m2
03	Kitchen	15.6 m2	10	Bathroom	4 m2	17	Terrace	40.2 m2
04	Restroom	1.6 m2	11	Garden	44.6 m2			
05	Terraces	33.8 m2	12	Terraces	127.60 m2			
06	Hall	10.8 m2	13	Pool	25 m2			
07	Bedroom/Ensuite	20.8 m2	14	Hall	16.5 m2			

### Summary

Plot Area	326 m <sup>2</sup>
Area Enclosed (all levels)	287 m <sup>2</sup>
Balcony/ all Terraces/ Pool/ Garden (all levels)	275.9 m <sup>2</sup>
Gross Area	562.9 m <sup>2</sup>

Measurements are approximate

# Edificio 1: Villa A



Level 1

**heights II**  
PERALTA

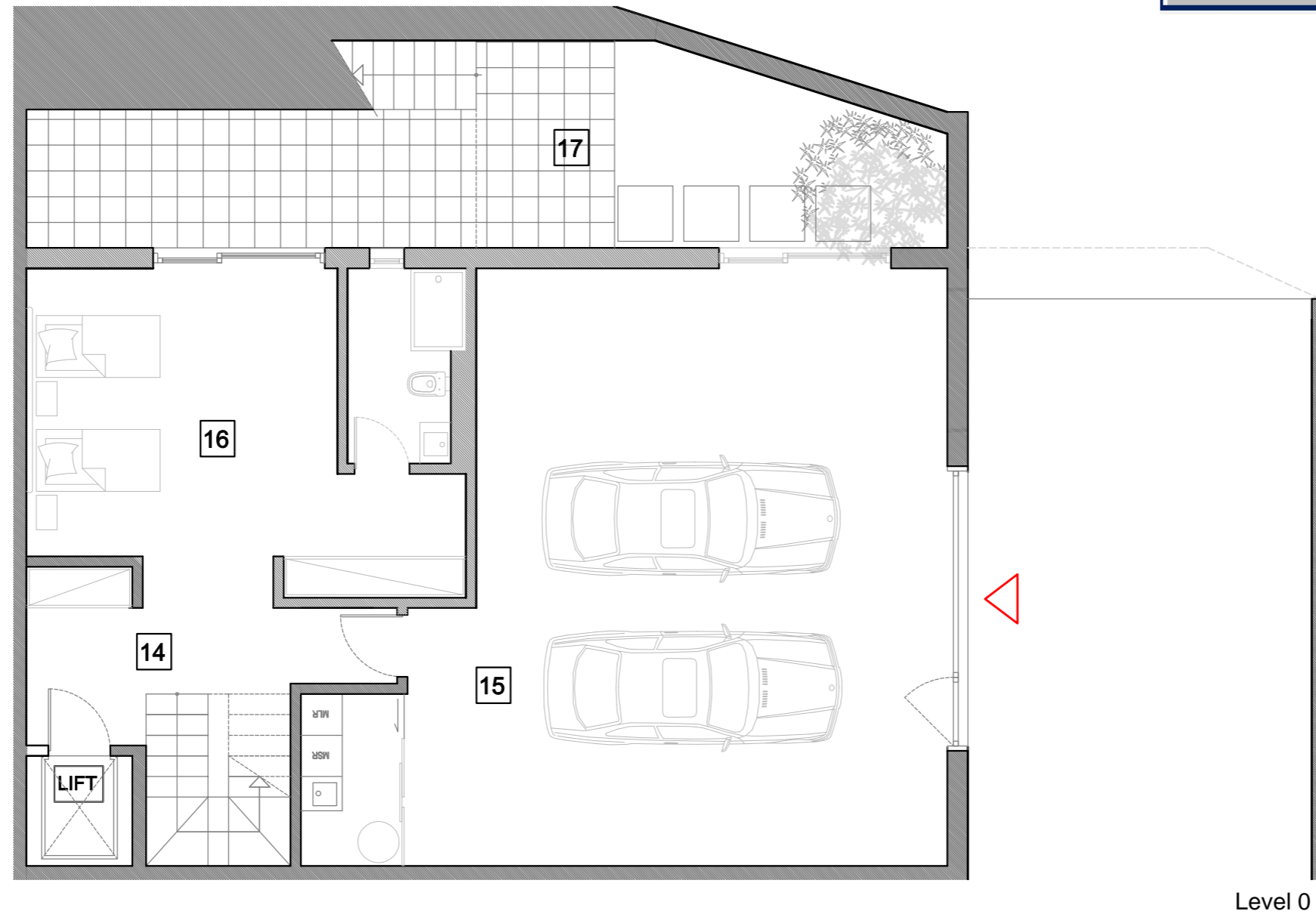
01	Balcony	4,7 m2	08	Bedroom/Ensuite	26.1 m2	15	Garage	69 m2
02	Living Room	42.2 m2	09	Bedroom	14.5 m2	16	Bedroom/Ensuite	27.4 m2
03	Kitchen	15.6 m2	10	Bathroom	4 m2	17	Terrace	40.2 m2
04	Restroom	1.6 m2	11	Garden	44.6 m2			
05	Terraces	33.8 m2	12	Terraces	127.60 m2			
06	Hall	10.8 m2	13	Pool	25 m2			
07	Bedroom/Ensuite	20.8 m2	14	Hall	16.5 m2			

**Summary**

Plot Area	326 m <sup>2</sup>
Area Enclosed (all levels)	287 m <sup>2</sup>
Balcony/ all Terraces/ Pool/ Garden (all levels)	275.9 m <sup>2</sup>
Gross Area	562.9 m <sup>2</sup>

Measurements are approximate

# Edificio 1: Villa A



**heights II**  
PERALTA

14	Hall	16.5 m <sup>2</sup>
15	Garage	69 m <sup>2</sup>
16	Bedroom/Ensuite	27.4 m <sup>2</sup>
17	Terrace	40.2 m <sup>2</sup>

**Summary**

Plot Area	326 m <sup>2</sup>
Area Enclosed (all levels)	287 m <sup>2</sup>
Balcony/ all Terraces/ Pool/ Garden (all levels)	275.9 m <sup>2</sup>
Gross Area	562.9 m <sup>2</sup>

Measurements are approximate