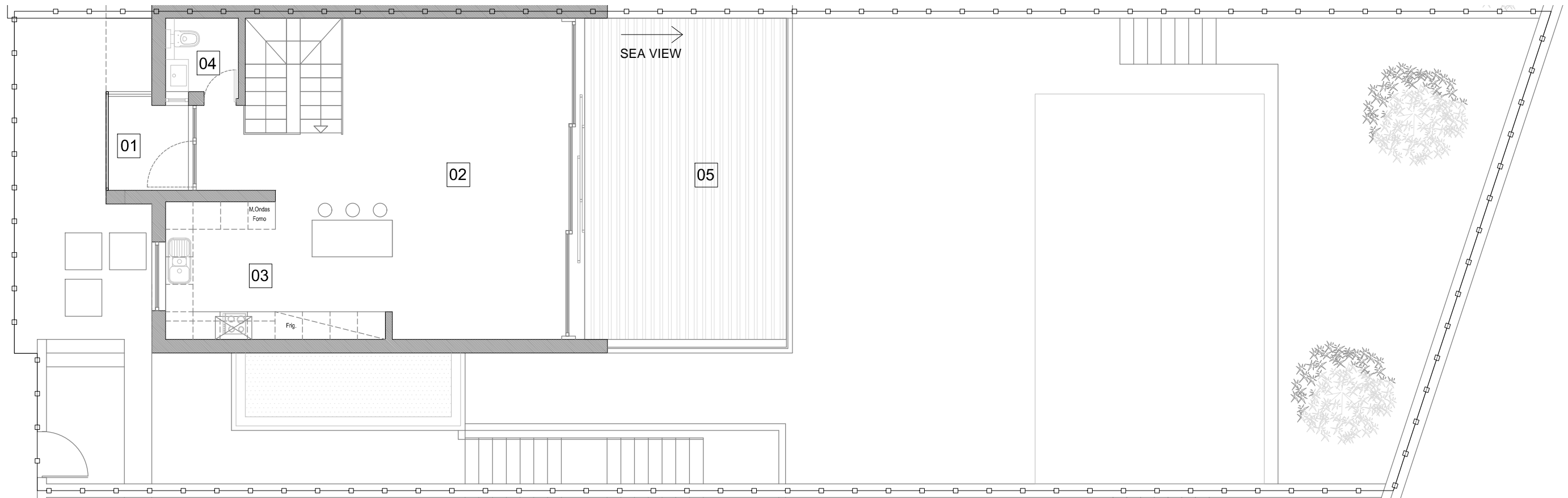


Edificio 1: Villa B

MASTERPLAN



Level 2

heights II
PERALTA

01	Balcony	4,7 m2	08	Bedroom/Ensuite	30.5 m2	15	Hall	9.0 m2
02	Living Room	42.7 m2	09	Bedroom	14.5 m2	16	Garage	55.4 m2
03	Kitchen	15.6 m2	10	Bathroom	3.7 m2	17	Bedroom/Ensuite	39.6 m2
04	Restroom	2.5 m2	11	Garden	75.3 m2	18	Wine Cellar	6 m2
05	Terraces	33.8 m2	12	Terraces	116.3 m2	19	Terrace	20.5 m2
06	Hall	10.8 m2	13	Pool	42.5 m2			
07	Bedroom/Ensuite	20.8 m2	14	Terrace	9.7 m2			

Summary

Plot Area	336 m ²
Area Enclosed (all levels)	305.5 m ²
Balcony/ all Terraces/ Pool/ Garden (all levels)	302.8 m ²
Gross Area	608.3 m ²

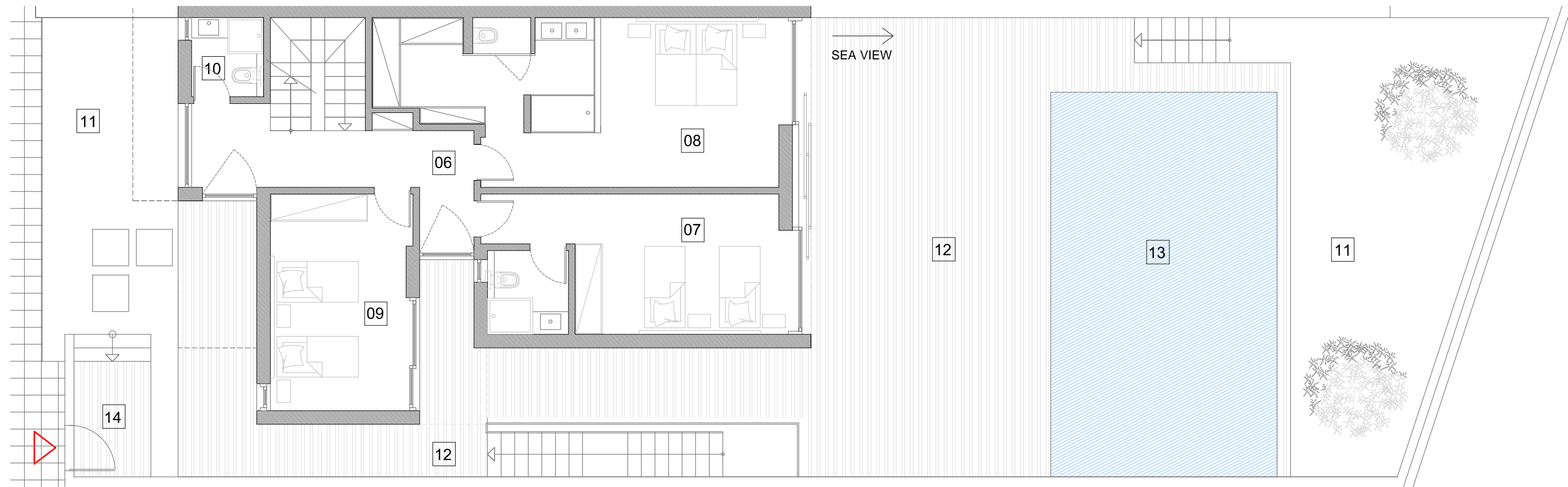
Measurements are approximate

Edificio 1: Villa B

MASTERPLAN



Edificio 1



Level 1

heights II
PERALTA

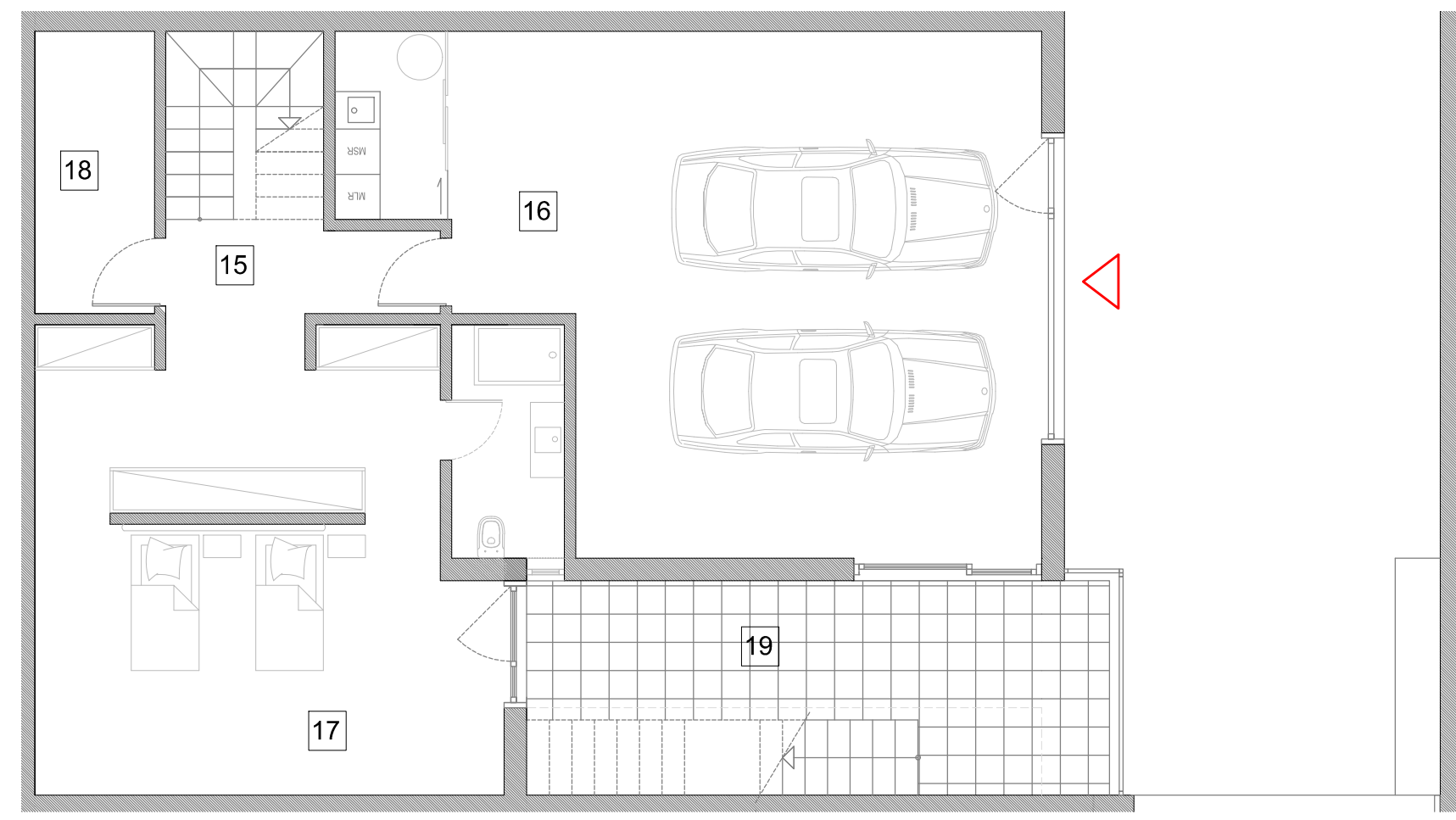
01	Balcony	4,7 m2	08	Bedroom/Ensuite	30.5 m2	15	Hall	9.0 m2
02	Living Room	42.7 m2	09	Bedroom	14.5 m2	16	Garage	55.4 m2
03	Kitchen	15.6 m2	10	Bathroom	3.7 m2	17	Bedroom/Ensuite	39.6 m2
04	Restroom	2.5 m2	11	Garden	75.3 m2	18	Wine Cellar	6 m2
05	Terraces	33.8 m2	12	Terraces	116.3 m2	19	Terrace	20.5 m2
06	Hall	10.8 m2	13	Pool	42.5 m2			
07	Bedroom/Ensuite	20.8 m2	14	Terrace	9.7 m2			

Summary

Plot Area	336 m ²
Area Enclosed (all levels)	305.5 m ²
Balcony/ all Terraces/ Pool/ Garden (all levels)	302.8 m ²
Gross Area	608.3 m ²

Measurements are approximate

Edificio 1: Villa B



Level 0

15	Hall	9.0 m ²
16	Garage	55.4 m ²
17	Bedroom/Ensuite	39.6 m ²
18	Wine Cellar	6 m ²
19	Terrace	20.5 m ²

Summary

Plot Area	336 m ²
Area Enclosed (all levels)	305.5 m ²
Balcony/ all Terraces/ Pool/ Garden (all levels)	302.8 m ²
Gross Area	608.3 m ²

Measurements are approximate