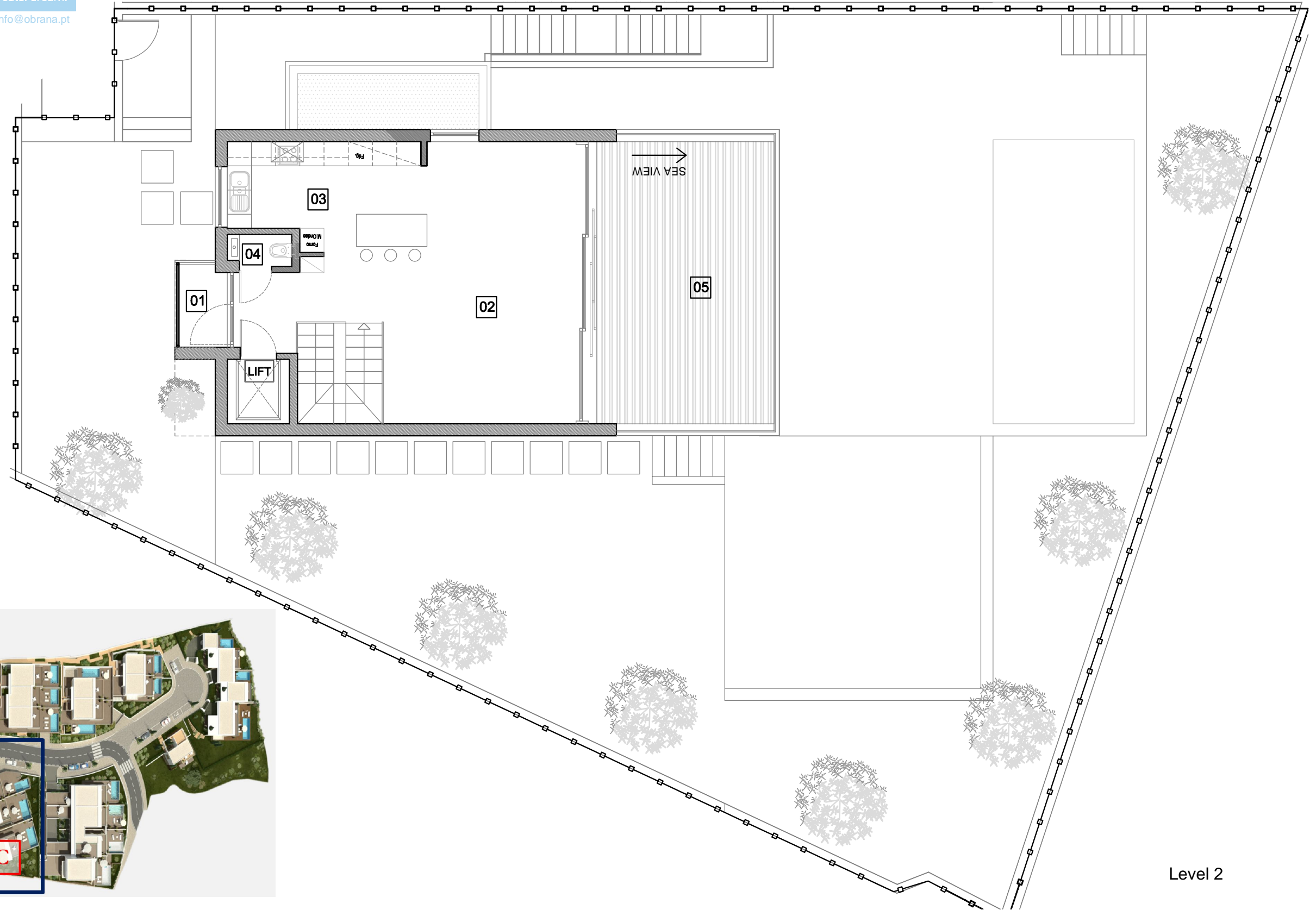


Edificio 1: Villa C



MASTERPLAN



Level 2

heights II
PERALTA

01	Balcony	4,9 m2	08	Bedroom/Ensuite	26.1 m2	15	Hall	16.5 m2
02	Living Room	42.2 m2	09	Bedroom	14.5 m2	16	Living Room	55.4 m2
03	Kitchen	12.7 m2	10	Bathroom	4 m2	17	Bedroom/Ensuite	39.6 m2
04	Restroom	1.6 m2	11	Garden	209.3 m2	18	Terraces	66.3 m2
05	Terraces	34.5 m2	12	Terraces	106.8 m2	19	Garage	52.2 m2
06	Hall	10.8 m2	13	Pool	24.5 m2			
07	Bedroom/Ensuite	20.8 m2	14	Terrace	24.7 m2			

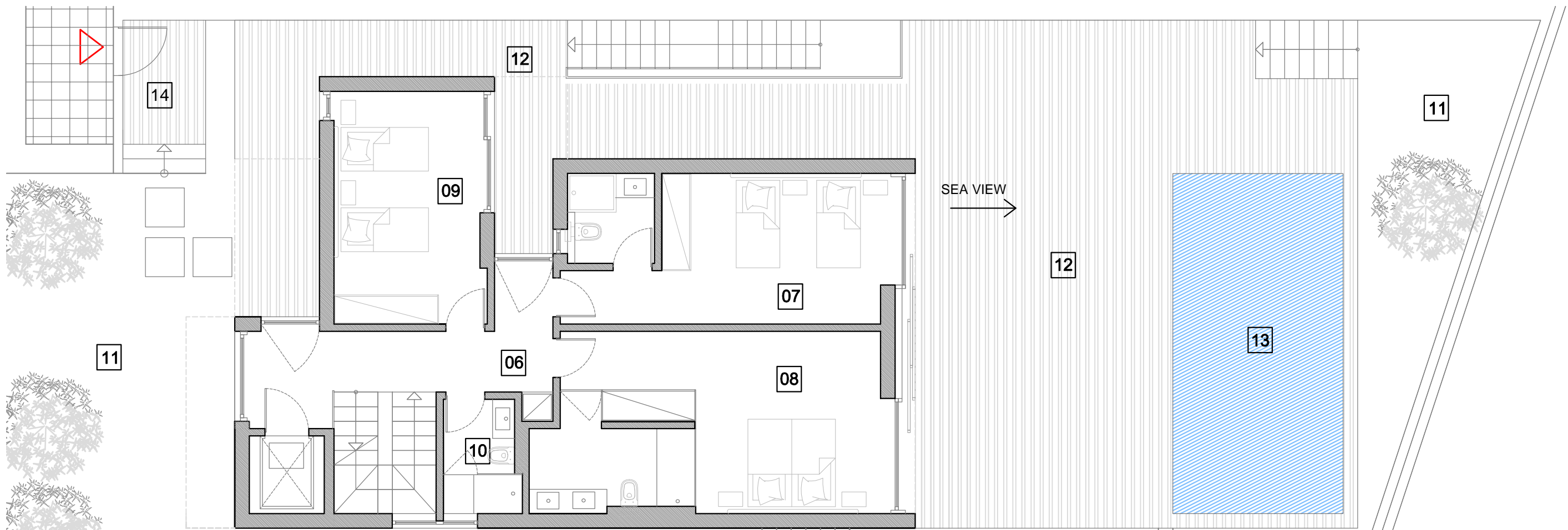
Summary

Plot Area	512 m ²
Area Enclosed (all levels)	368.3 m ²
Balcony/ all Terraces/ Pool/ Garden (all levels)	471 m ²
Gross Area	839.3 m ²

Measurements are approximate

Edificio 1: Villa C

MASTERPLAN



Level 1

heights II
PERALTA

01	Balcony	4,9 m2	08	Bedroom/Ensuite	26.1 m2	15	Hall	16.5 m2
02	Living Room	42.2 m2	09	Bedroom	14.5 m2	16	Living Room	55.4 m2
03	Kitchen	12.7 m2	10	Bathroom	4 m2	17	Bedroom/Ensuite	39.6 m2
04	Restroom	1.6 m2	11	Garden	209.3 m2	18	Terraces	66.3 m2
05	Terraces	34.5 m2	12	Terraces	106.8 m2	19	Garage	52.2 m2
06	Hall	10.8 m2	13	Pool	24.5 m2			
07	Bedroom/Ensuite	20.8 m2	14	Terrace	24.7 m2			

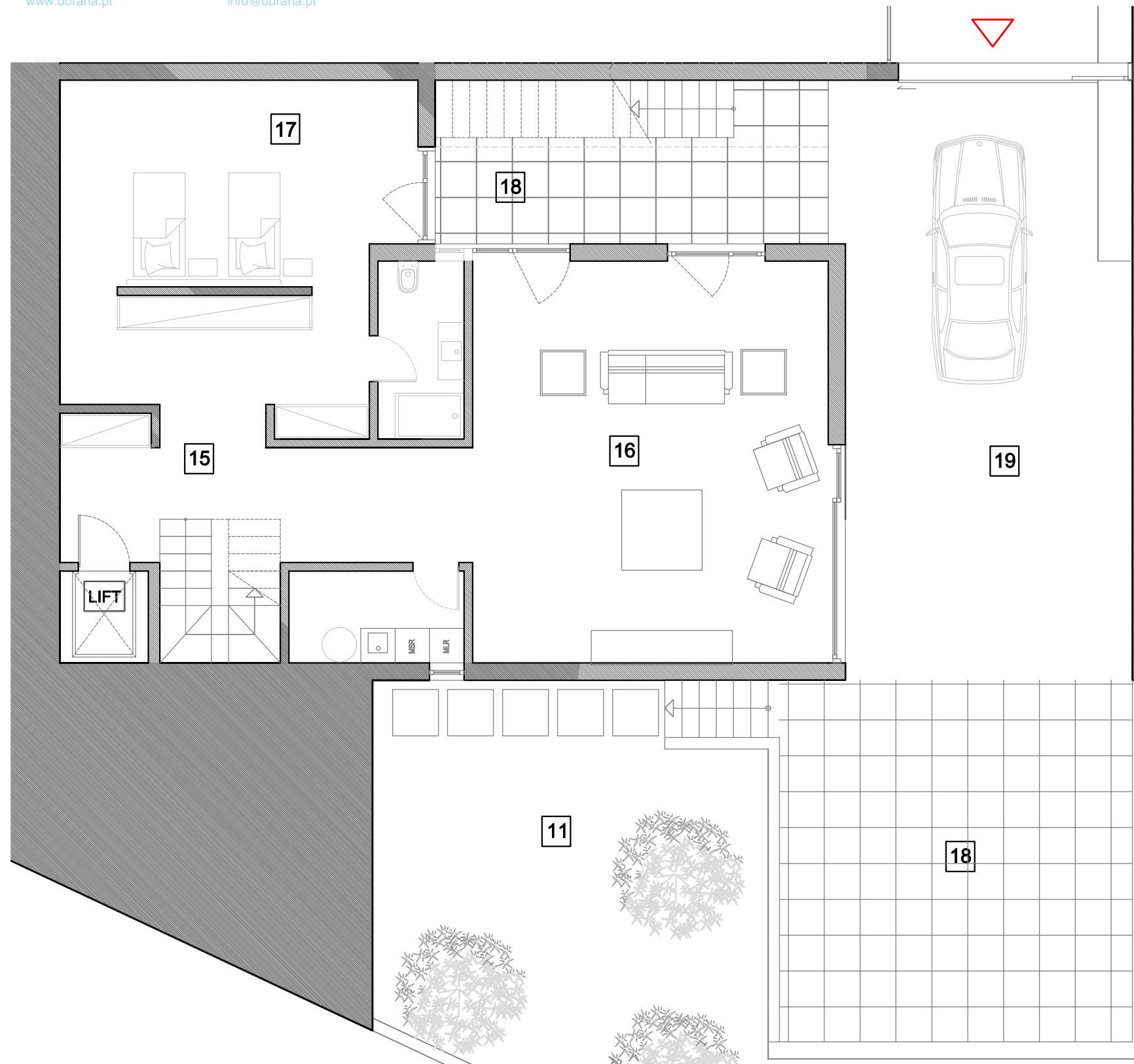
Summary

Plot Area	512 m ²
Area Enclosed (all levels)	368.3 m ²
Balcony/ all Terraces/ Pool/ Garden (all levels)	471 m ²
Gross Area	839.3 m ²

Measurements are approximate

Edificio 1: Villa C

MASTERPLAN



Level 0

heights II
PERALTA

15	Hall	16.5 m ²
16	Living Room	55.4 m ²
17	Bedroom/Ensuite	39.6 m ²
18	Terraces	66.3 m ²
19	Garage	52.2 m ²

Summary

Plot Area	512 m ²
Area Enclosed (all levels)	368.3 m ²
Balcony/ all Terraces/ Pool/ Garden (all levels)	471 m ²
Gross Area	839.3 m ²

Measurements are approximate