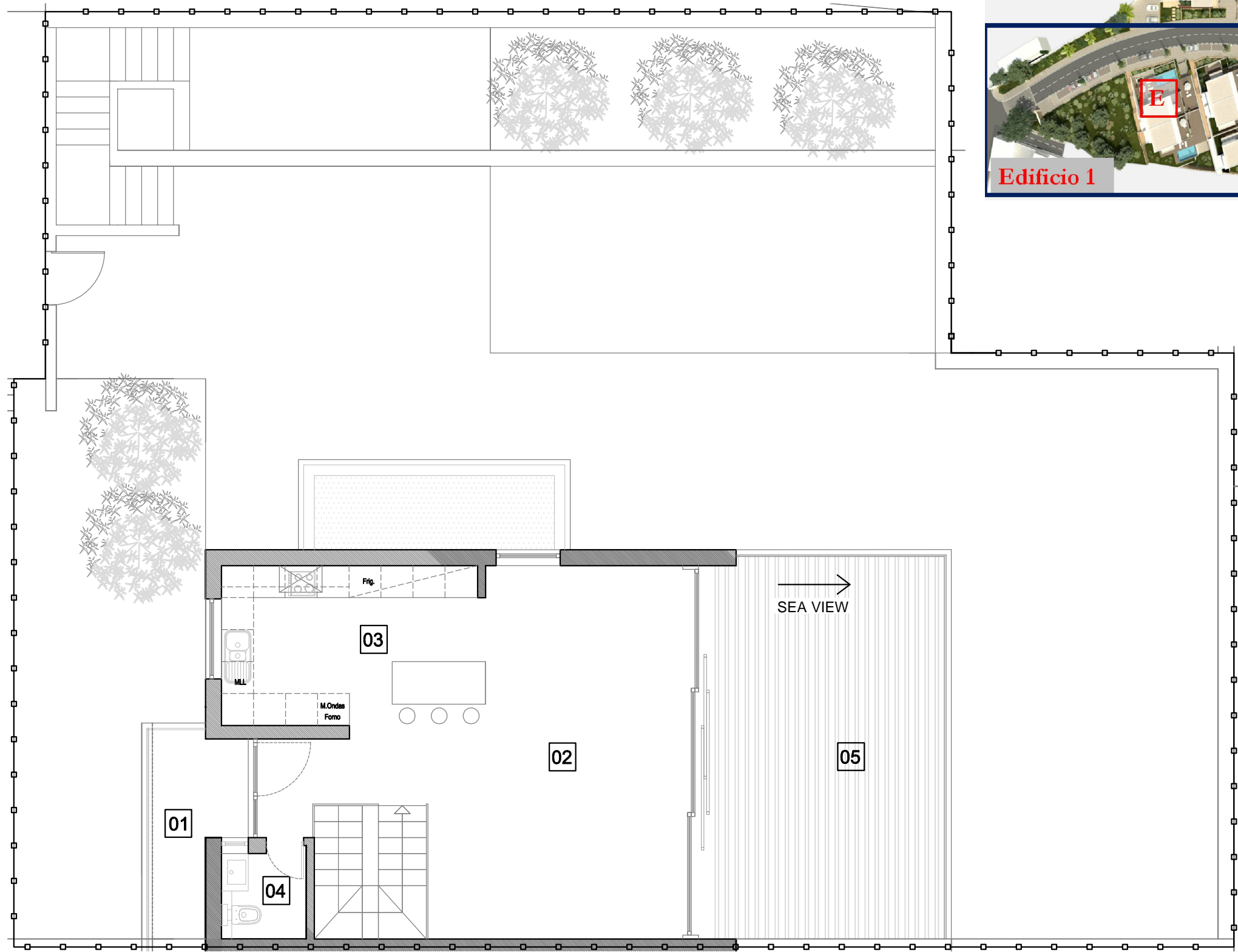


# Edificio 1: Villa E



Level 2

**heights II**  
PERALTA

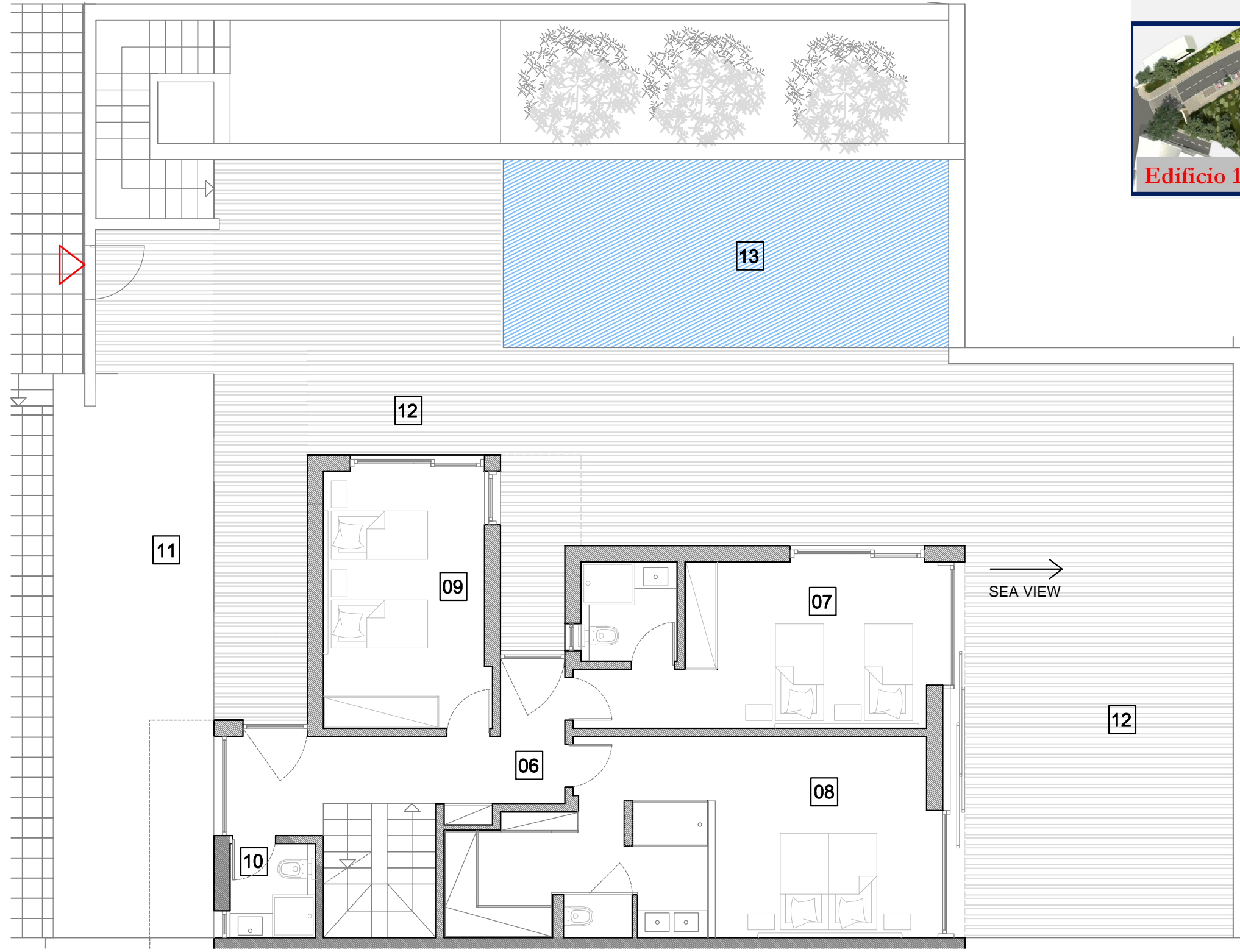
01	Balcony	4,7 m2	08	Bedroom/Ensuite	30.5 m2	15	Garage	55.4 m2
02	Living Room	42.7 m2	09	Bedroom	14.5 m2	16	Bedroom/Ensuite	39.6m2
03	Kitchen	15.6 m2	10	Bathroom	3.7 m2	17	Wine Cellar	6 m2
04	Restroom	2.5 m2	11	Garden	61.5 m2	18	Terraces	30.3 m2
05	Terraces	33.8 m2	12	Terraces	157.2 m2			
06	Hall	10.8 m2	13	Pool	29 m2			
07	Bedroom/Ensuite	20.8 m2	14	Hall	8.2 m2			

**Summary**

Plot Area	362 m <sup>2</sup>
Area Enclosed (all levels)	315,1 m <sup>2</sup>
Balcony/ all Terraces/ Pool/ Garden (all levels)	316,5 m <sup>2</sup>
Gross Area	631,6 m <sup>2</sup>

Measurements are approximate

# Edificio 1: Villa E



Level 1

**heights II**  
PERALTA

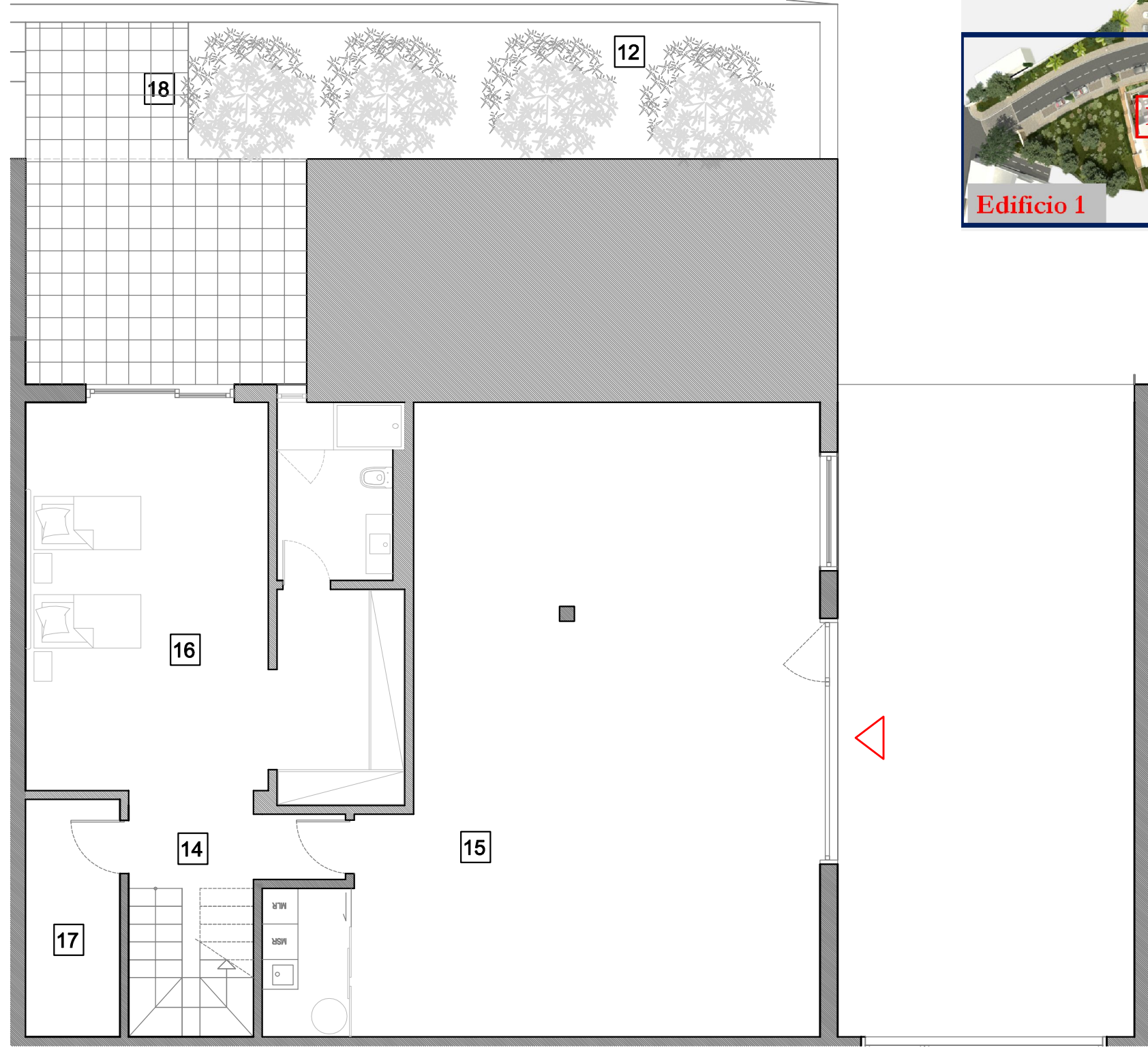
01	Balcony	4,7 m2	08	Bedroom/Ensuite	30.5 m2	15	Garage	55.4 m2
02	Living Room	42.7 m2	09	Bedroom	14.5 m2	16	Bedroom/Ensuite	39.6m2
03	Kitchen	15.6 m2	10	Bathroom	3.7 m2	17	Wine Cellar	6 m2
04	Restroom	2.5 m2	11	Garden	61.5 m2	18	Terraces	30.3 m2
05	Terraces	33.8 m2	12	Terraces	157.2 m2			
06	Hall	10.8 m2	13	Pool	29 m2			
07	Bedroom/Ensuite	20.8 m2	14	Hall	8.2 m2			

**Summary**

Plot Area	362 m <sup>2</sup>
Area Enclosed (all levels)	315,1 m <sup>2</sup>
Balcony/ all Terraces/ Pool/ Garden (all levels)	316,5 m <sup>2</sup>
Gross Area	631,6 m <sup>2</sup>

Measurements are approximate

# Edificio 1: Villa E



Level 0

**heights II**  
PERALTA

14	Hall	8.2 m <sup>2</sup>
15	Garage	55.4 m <sup>2</sup>
16	Bedroom/Ensuite	39.6m <sup>2</sup>
17	Wine Cellar	6 m <sup>2</sup>
18	Terraces	30.3 m <sup>2</sup>

**Summary**

Plot Area	362 m <sup>2</sup>
Area Enclosed (all levels)	315,1 m <sup>2</sup>
Balcony/ all Terraces/ Pool/ Garden (all levels)	316,5 m <sup>2</sup>
Gross Area	631,6 m <sup>2</sup>

Measurements are approximate