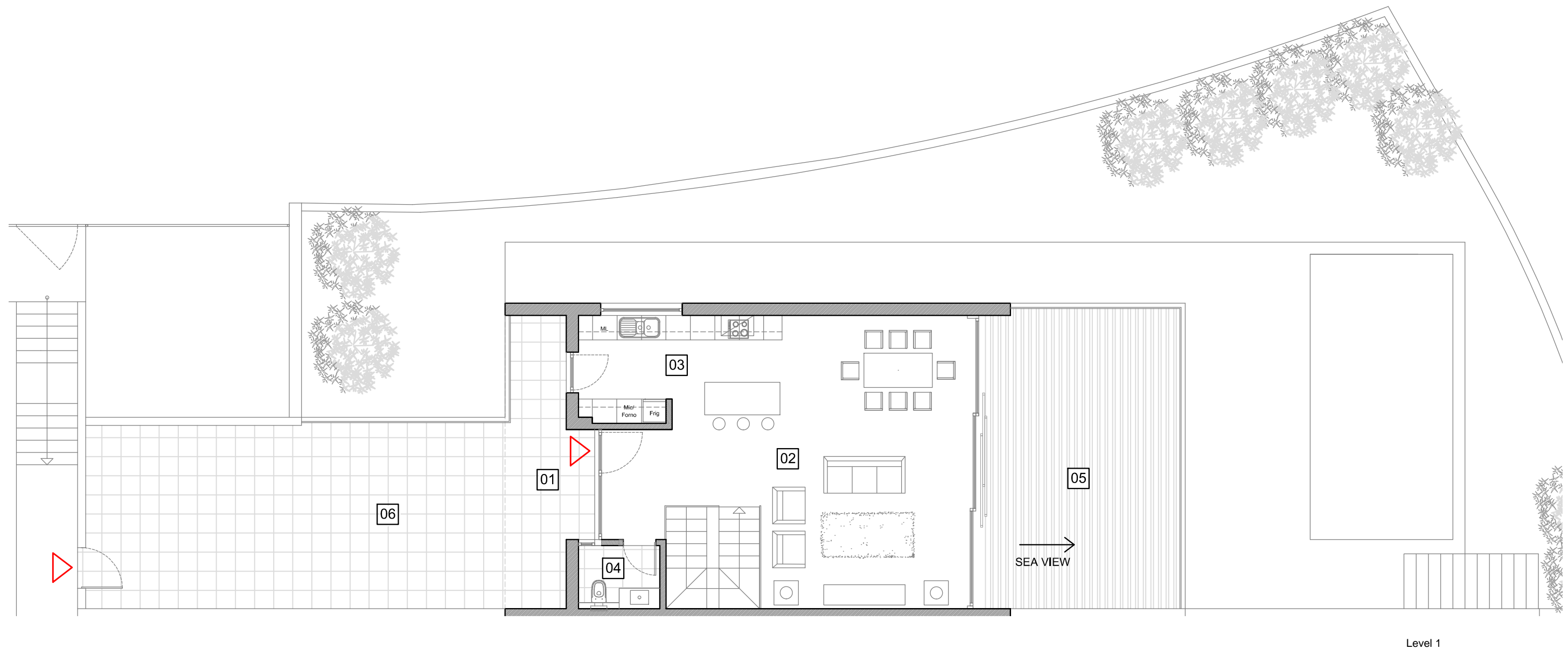


Edificio 2: Villa A

MASTERPLAN



Level 1

heights II

PERALTA

01	Entrance	19 m2	07	Hall	14 m2	13	Garage	30.1 m2
02	Living Room	51.4 m2	08	Bedroom	18.6 m2	14	Garden	124.9 m2
03	Kitchen	13.6 m2	09	Bedroom/Ensuite	27.5 m2	15	Terrace	65.9 m2
04	Restroom	3.1 m2	10	Bedroom/Ensuite	20.9 m2	16	Pool	24.5 m2
05	Terraces	37.7 m2	11	Bathroom	5.5 m2			
06	Terraces	50.9 m2	12	Laundry	4.3 m2			

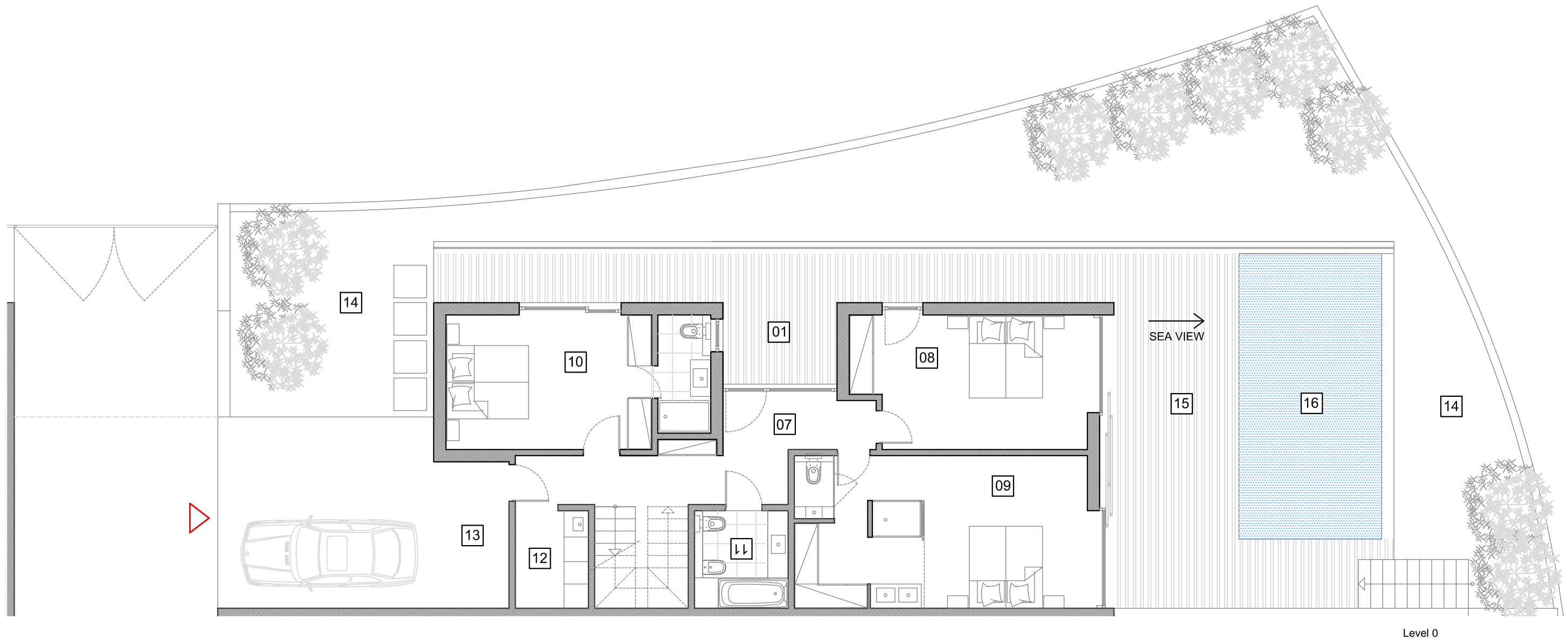
Summary

Plot Area	394 m ²
Area Enclosed (all levels)	224.5 m ²
Entrance/ all Terraces/ Pool/ Garden (all levels)	322.9 m ²
Gross Area	547.4 m ²

Measurements are approximate

Edificio 2: Villa A

MASTERPLAN



Level 0

heights II
PERALTA

01	Entrance	19 m ²	07	Hall	14 m ²	13	Garage	30.1 m ²
02	Living Room	51.4 m ²	08	Bedroom	18.6 m ²	14	Garden	124.9 m ²
03	Kitchen	13.6 m ²	09	Bedroom/Ensuite	27.5 m ²	15	Terrace	65.9 m ²
04	Restroom	3.1 m ²	10	Bedroom/Ensuite	20.9 m ²	16	Pool	24.5 m ²
05	Terraces	37.7 m ²	11	Bathroom	5.5 m ²			
06	Terraces	50.9 m ²	12	Laundry	4.3 m ²			

Summary

Plot Area	394 m ²
Area Enclosed (all levels)	224.5 m ²
Entrance/ all Terraces/ Pool/ Garden (all levels)	322.9 m ²
Gross Area	547.4 m ²

Measurements are approximate