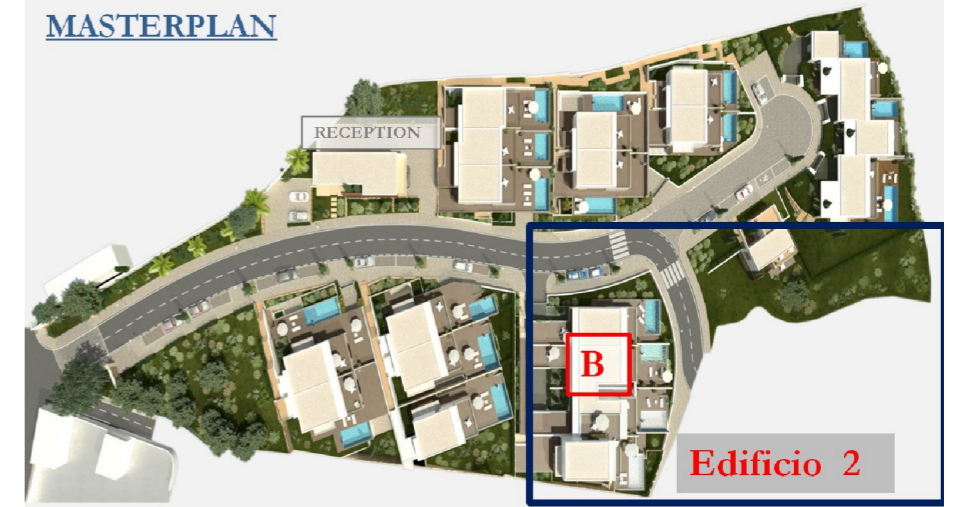


# Edificio 2: Villa B

MASTERPLAN



Level 1

## heights II PERALTA

01	Entrance	21.2 m2	07	Hall	14 m2	13	Garage	30.1 m2
02	Living Room	56.4 m2	08	Bedroom	18.6 m2	14	Garden	55.8 m2
03	Kitchen	15.9 m2	09	Bedroom/Ensuite	27.5 m2	15	Terrace	69.2 m2
04	Restroom	3.1 m2	10	Bedroom/Ensuite	20.9 m2	16	Pool	25.2 m2
05	Terraces	37.7 m2	11	Bathroom	5.5 m2			
06	Terraces	50.9 m2	12	Laundry	4.3 m2			

**Summary**

Plot Area	329 m <sup>2</sup>
Area Enclosed (all levels)	231.7 m <sup>2</sup>
Entrance/ all Terraces/ Pool/ Garden (all levels)	260 m <sup>2</sup>
Gross Area	491.7 m <sup>2</sup>

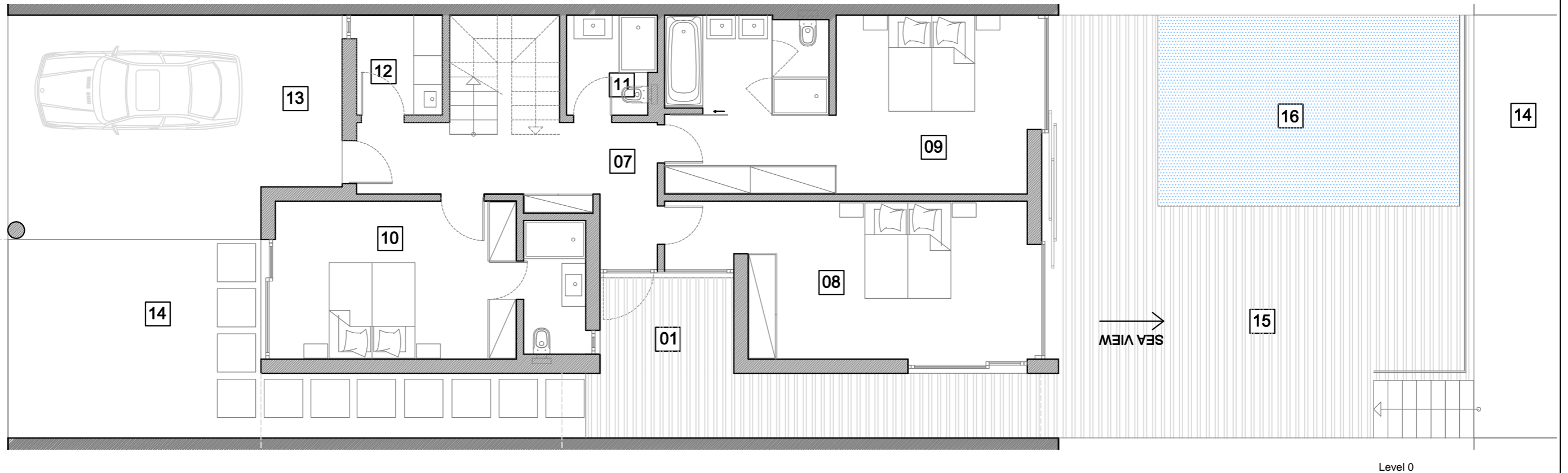
Measurements are approximate

# Edificio 2: Villa B

MASTERPLAN



Edificio 2



## heights II PERALTA

01	Entrance	21.2 m <sup>2</sup>	07	Hall	14 m <sup>2</sup>	13	Garage	30.1 m <sup>2</sup>
02	Living Room	56.4 m <sup>2</sup>	08	Bedroom	21.7 m <sup>2</sup>	14	Garden	55.8 m <sup>2</sup>
03	Kitchen	15.9 m <sup>2</sup>	09	Bedroom/Ensuite	30 m <sup>2</sup>	15	Terrace	69.2 m <sup>2</sup>
04	Restroom	3.1 m <sup>2</sup>	10	Bedroom/Ensuite	20.9 m <sup>2</sup>	16	Pool	25.2 m <sup>2</sup>
05	Terraces	37.7 m <sup>2</sup>	11	Bathroom	5.5 m <sup>2</sup>			
06	Terraces	50.9 m <sup>2</sup>	12	Laundry	4.3 m <sup>2</sup>			

**Summary**

Plot Area	329 m <sup>2</sup>
Area Enclosed (all levels)	231.7 m <sup>2</sup>
Entrance/ all Terraces/ Pool/ Garden	260 m <sup>2</sup>
Gross Area	491.7 m <sup>2</sup>

Measurements are approximate