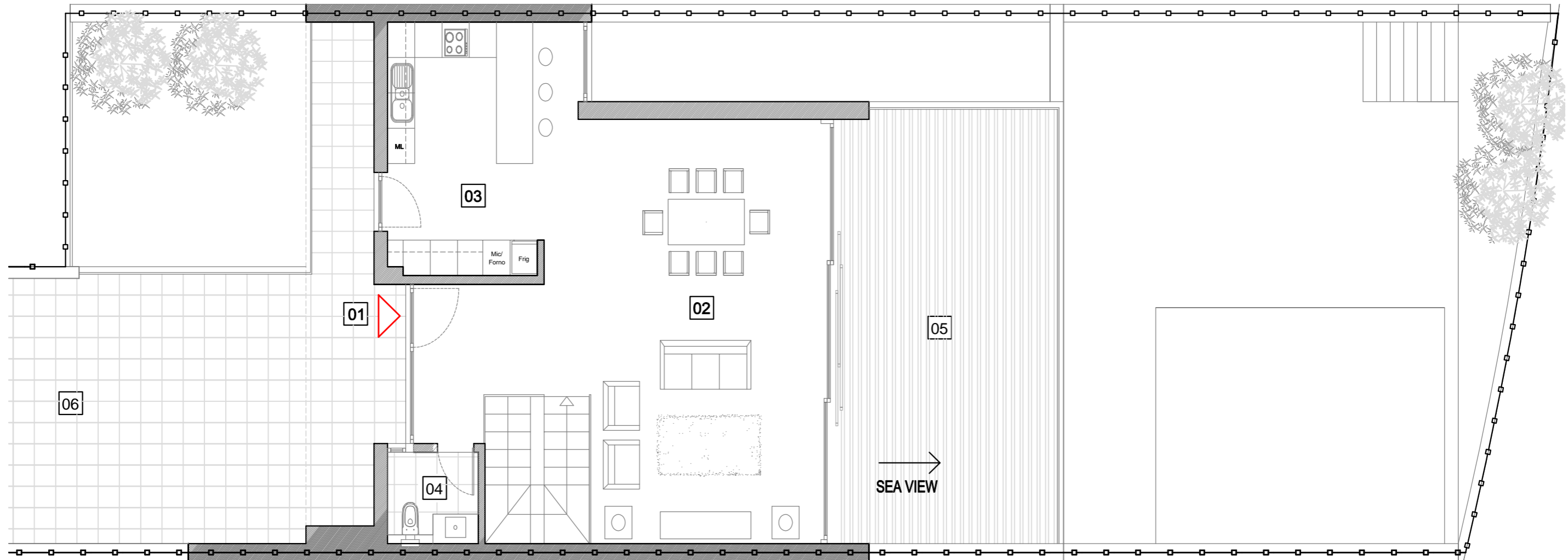


# Edificio 2: Villa C

MASTERPLAN



**Edificio 2**



Level 1

**heights II**  
PERALTA

01	Entrance	21.2 m2	07	Hall	14 m2	13	Garage/ Laundry	34.8 m2
02	Living Room	56.4 m2	08	Bedroom	18.6 m2	14	Garden	44.9 m2
03	Kitchen	15.9 m2	09	Bedroom/Ensuite	27.5 m2	15	Terrace	69.2 m2
04	Restroom	3.1 m2	10	Bedroom/Ensuite	20.9 m2	16	Pool	25.2 m2
05	Terraces	37.7 m2	11	Bathroom	5.5 m2			
06	Terraces	50.9 m2	12	Laundry	4.3 m2			

Summary

Plot Area	—○—○—○—○—○—○—	318 m <sup>2</sup>
Area Enclosed (all levels)	.....	231.7 m <sup>2</sup>
Entrance/ all Terraces/ Pool/ Garden	.....	249.1 m <sup>2</sup>
Gross Area	.....	480.8 m <sup>2</sup>

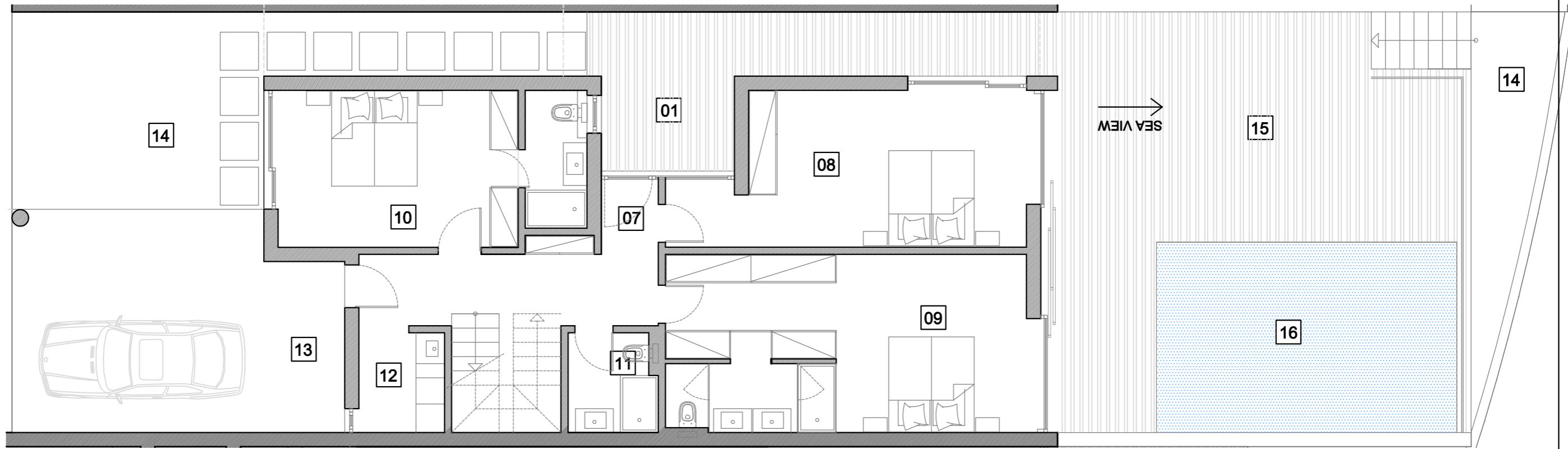
Measurements are approximate

# Edificio 2: Villa C

MASTERPLAN



Edificio 2



Level 0

heights II  
PERALTA

01	Entrance	21.2 m <sup>2</sup>	07	Hall	14 m <sup>2</sup>	13	Garage/ Laundry	34.8 m <sup>2</sup>
02	Living Room	56.4 m <sup>2</sup>	08	Bedroom	21.7 m <sup>2</sup>	14	Garden	44.9 m <sup>2</sup>
03	Kitchen	15.9 m <sup>2</sup>	09	Bedroom/Ensuite	30 m <sup>2</sup>	15	Terrace	69.2 m <sup>2</sup>
04	Restroom	3.1 m <sup>2</sup>	10	Bedroom/Ensuite	20.9 m <sup>2</sup>	16	Pool	25.2 m <sup>2</sup>
05	Terraces	37.7 m <sup>2</sup>	11	Bathroom	5.5 m <sup>2</sup>			
06	Terraces	50.9 m <sup>2</sup>	12	Laundry	4.3 m <sup>2</sup>			

Summary

Plot Area	318 m <sup>2</sup>
Area Enclosed (all levels)	231.7 m <sup>2</sup>
Entrance/ all Terraces/ Pool/ Garden	249.1 m <sup>2</sup>
Gross Area	480.8 m <sup>2</sup>

Measurements are approximate