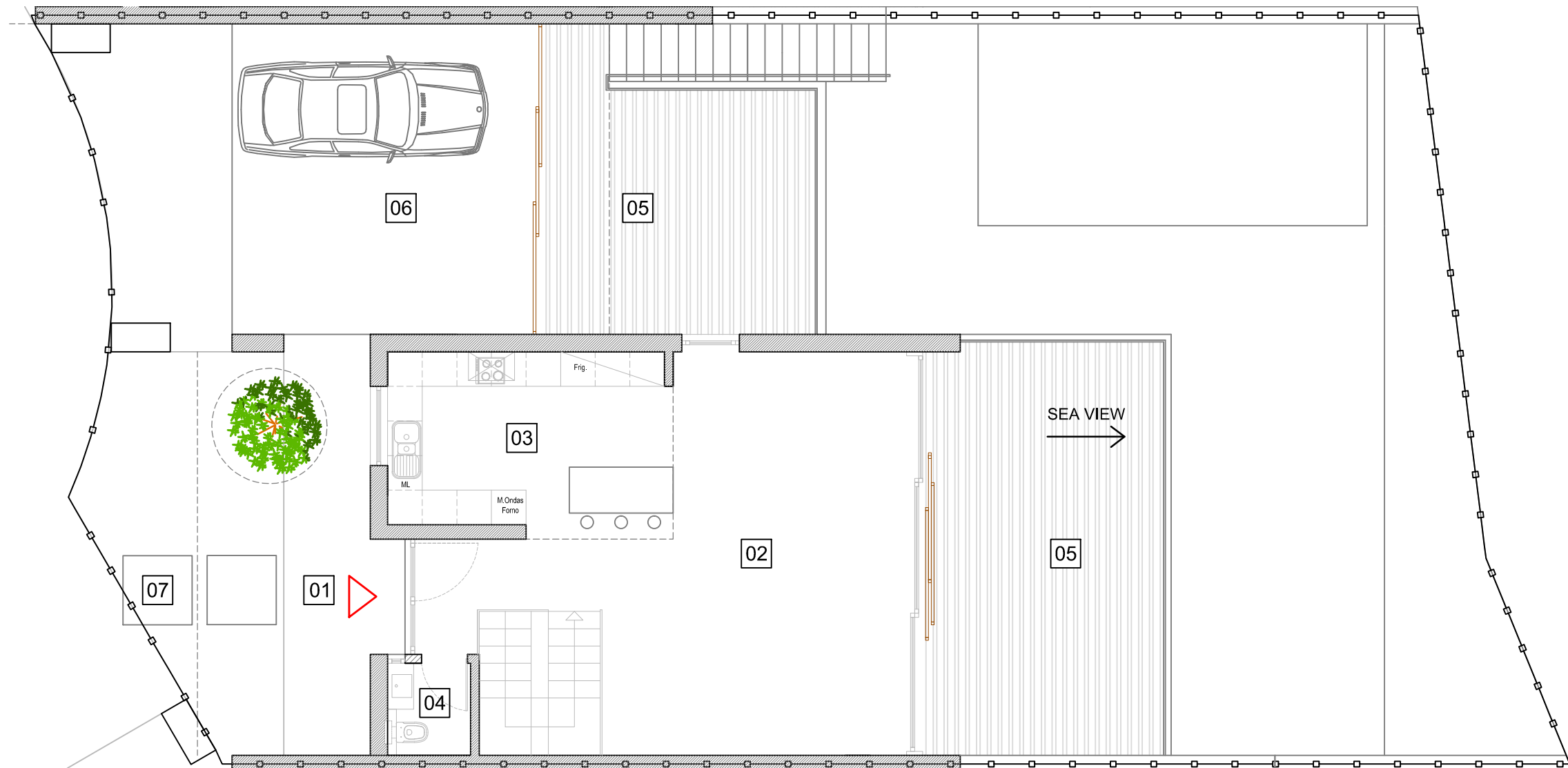


Phase 2 : Villa B



Level 1

heights II PERALTA

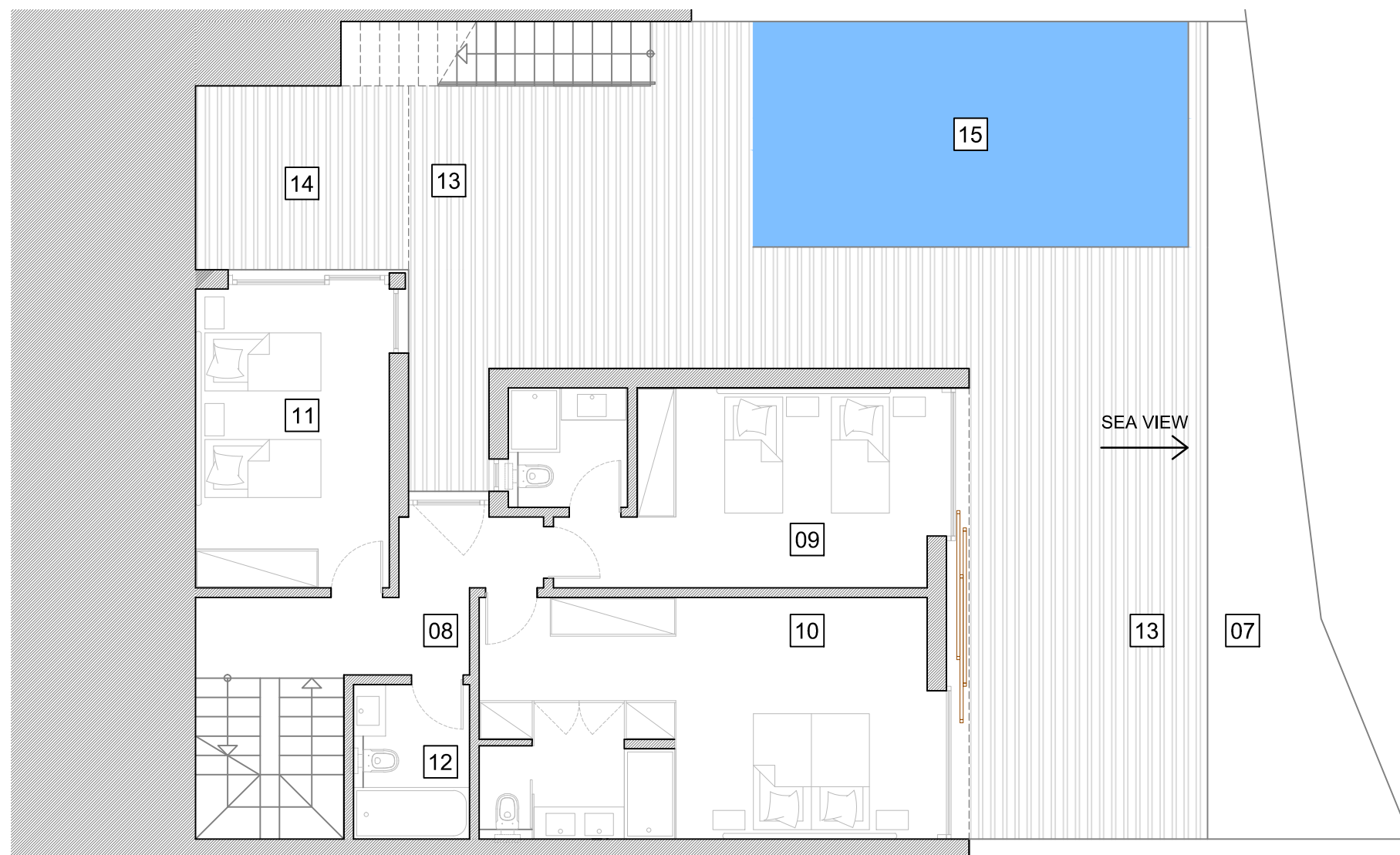
01	Entrance Terrace	16.9 m2	07	Gardens	52.5 m2	13	Terraces	72.25 m2
02	Living Room	43.4 m2	08	Hall	8.0 m2	14	Covered Terrace	10 m2
03	Kitchen	15.2 m2	09	Bedroom	19.8 m2	15	Pool	23.6 m2
04	Restroom	2.3 m2	10	Bedroom	26.4 m2			
05	Terraces	55.1 m2	11	Bedroom	14.2 m2			
06	Car Parking	29.75 m2	12	Bathroom	4.3 m2			

Summary
(all levels)

Plot Area	280 m ²
Covered Area (council area)	148.95 m ²
Covered Area (all levels)	178.7 m ²
All Terraces & Pool	177.85 m ²
Gross Area	356.55 m ²

Measurements are approximate

Phase 2 : Villa B



Level 0

heights II PERALTA

01	Entrance Terrace	16.9 m2	07	Gardens	52.5 m2	13	Terraces	72.25 m2
02	Living Room	43.4 m2	08	Hall	8.0 m2	14	Covered Terrace	10 m2
03	Kitchen	15.2 m2	09	Bedroom	19.8 m2	15	Pool	23.6 m2
04	Restroom	2.3 m2	10	Bedroom	26.4 m2			
05	Terraces	55.1 m2	11	Bedroom	14.2 m2			
06	Car Parking	29.75 m2	12	Bathroom	4.3 m2			

Summary
(all levels)

Plot Area	280 m ²
Covered Area (council area)	148.95 m ²
Covered Area (all levels)	178.7 m ²
All Terraces & Pool	177.85 m ²
Gross Area	356.55 m ²

Measurements are approximate