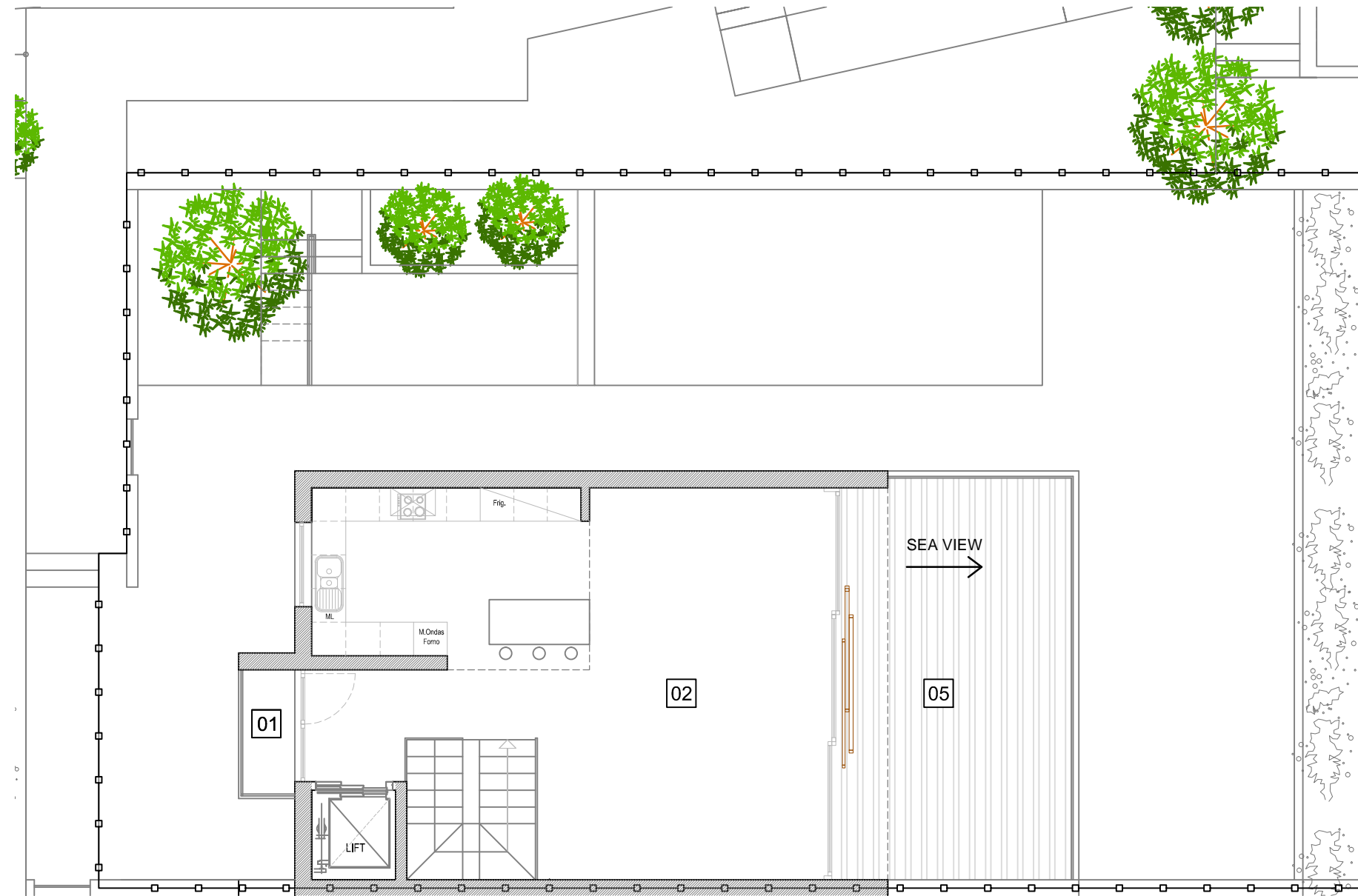


Phase 2 : Villa 4C



Level 2

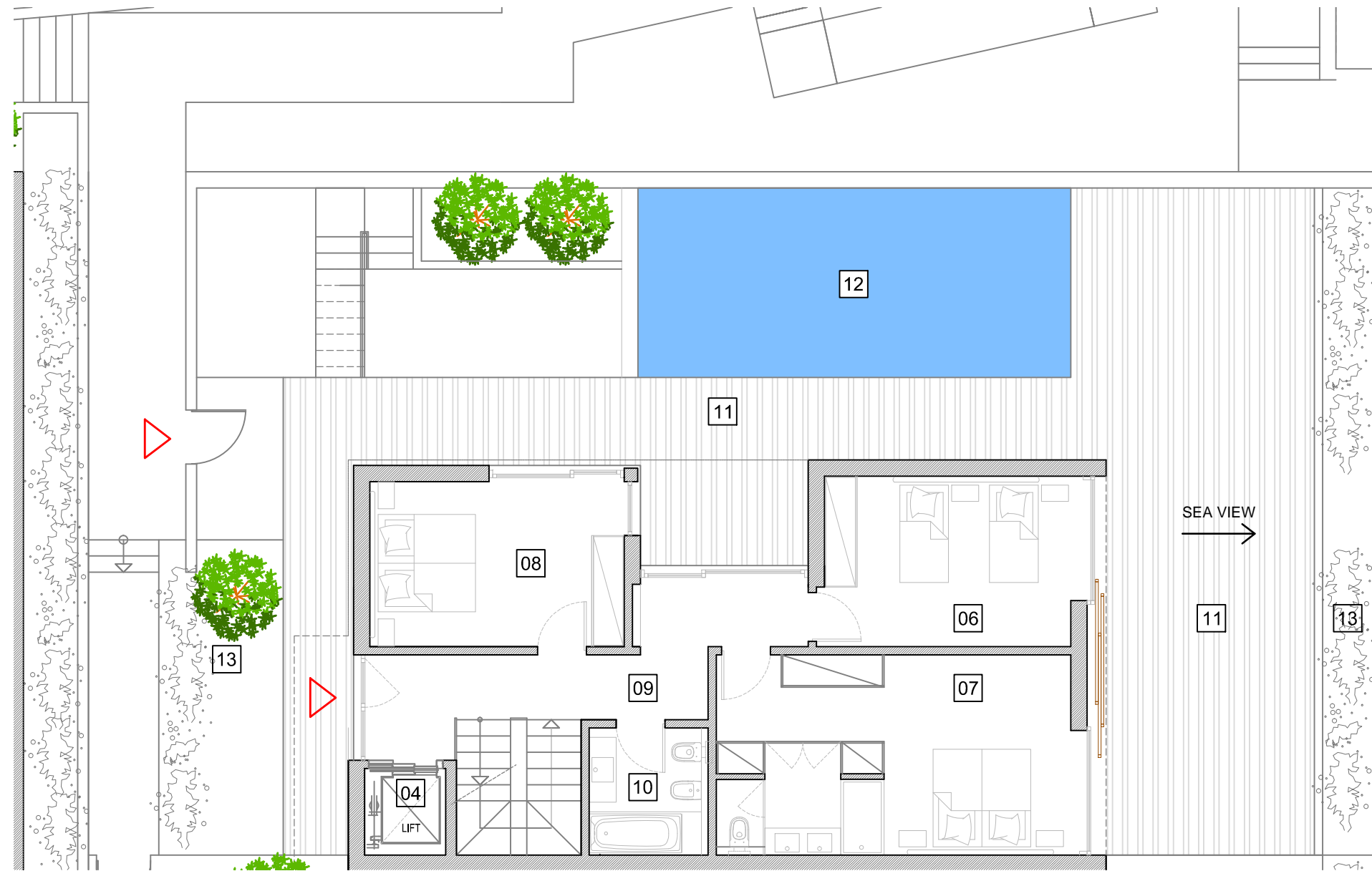
heights II PERALTA

01	Balcony	2.6m2	07	Bedroom	24.6 m2	13	Gardens	23,85 m2
02	Living Room	41.6 m2	08	Bedroom	14.6 m2	14	Gymnasium	38.4 m2
03	Kitchen	15.3 m2	09	Hall	13.2 m2	15	Garage	40.5 m2
04	Lift		10	Bathroom	5.1 m2	16	Bathroom	4.2 m2
05	Terrace	35.15 m2	11	Terraces	111.3 m2	17	Laundry	5 m2
06	Bedroom	15 m2	12	Pool	28 m2	18	Terrace	23.4 m2

Summary
(all levels)

Plot Area	288 m ²
Covered Area (council area)	151.85 m ²
Covered Area (all levels)	253.55 m ²
All Terraces & Pool	200.5 m ²
Gross Area	454.05 m ²

Phase 2 : Villa 4C



Level 1

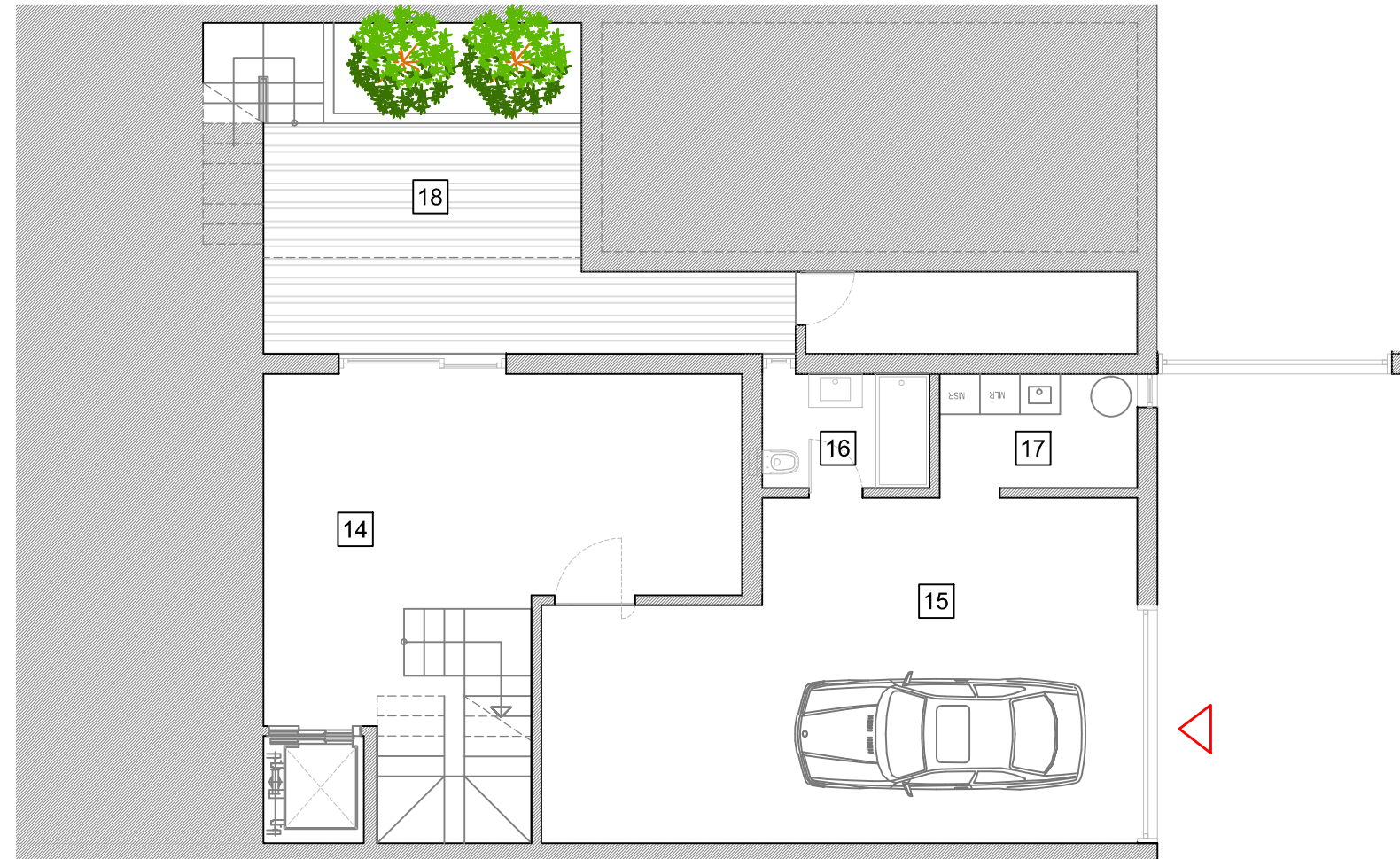
heights II
PERALTA

01	Balcony	2.6m2	07	Bedroom	24.6 m2	13	Gardens	23,85 m2
02	Living Room	41.6 m2	08	Bedroom	14.6 m2	14	Gymnasium	38.4 m2
03	Kitchen	15.3 m2	09	Hall	13.2 m2	15	Garage	40.5 m2
04	Lift		10	Bathroom	5.1 m2	16	Bathroom	4.2 m2
05	Terrace	35.15 m2	11	Terraces	111.3 m2	17	Laundry	5 m2
06	Bedroom	15 m2	12	Pool	28 m2	18	Terrace	23.4 m2

Summary
(all levels)

Plot Area	288 m ²
Covered Area (council area)	151.85 m ²
Covered Area (all levels)	253.55 m ²
All Terraces & Pool	200.5 m ²
Gross Area	454.05 m ²

Phase 2 : Villa 4C



Level 0

heights II
PERALTA

01	Balcony	2.6m2	07	Bedroom	24.6 m2	13	Gardens	23,85 m2
02	Living Room	41.6 m2	08	Bedroom	14.6 m2	14	Gymnasium	38.4 m2
03	Kitchen	15.3 m2	09	Hall	13.2 m2	15	Garage	40.5 m2
04	Lift		10	Bathroom	5.1 m2	16	Bathroom	4.2 m2
05	Terrace	35.15 m2	11	Terraces	111.3 m2	17	Laundry	5 m2
06	Bedroom	15 m2	12	Pool	28 m2	18	Terrace	23.4 m2

Summary
(all levels)

Plot Area	288 m ²
Covered Area (council area)	151.85 m ²
Covered Area (all levels)	253.55 m ²
All Terraces & Pool	200.5 m ²
Gross Area	454.05 m ²