

# Phase 2 : Villa C



Level 1

## heights II PERALTA

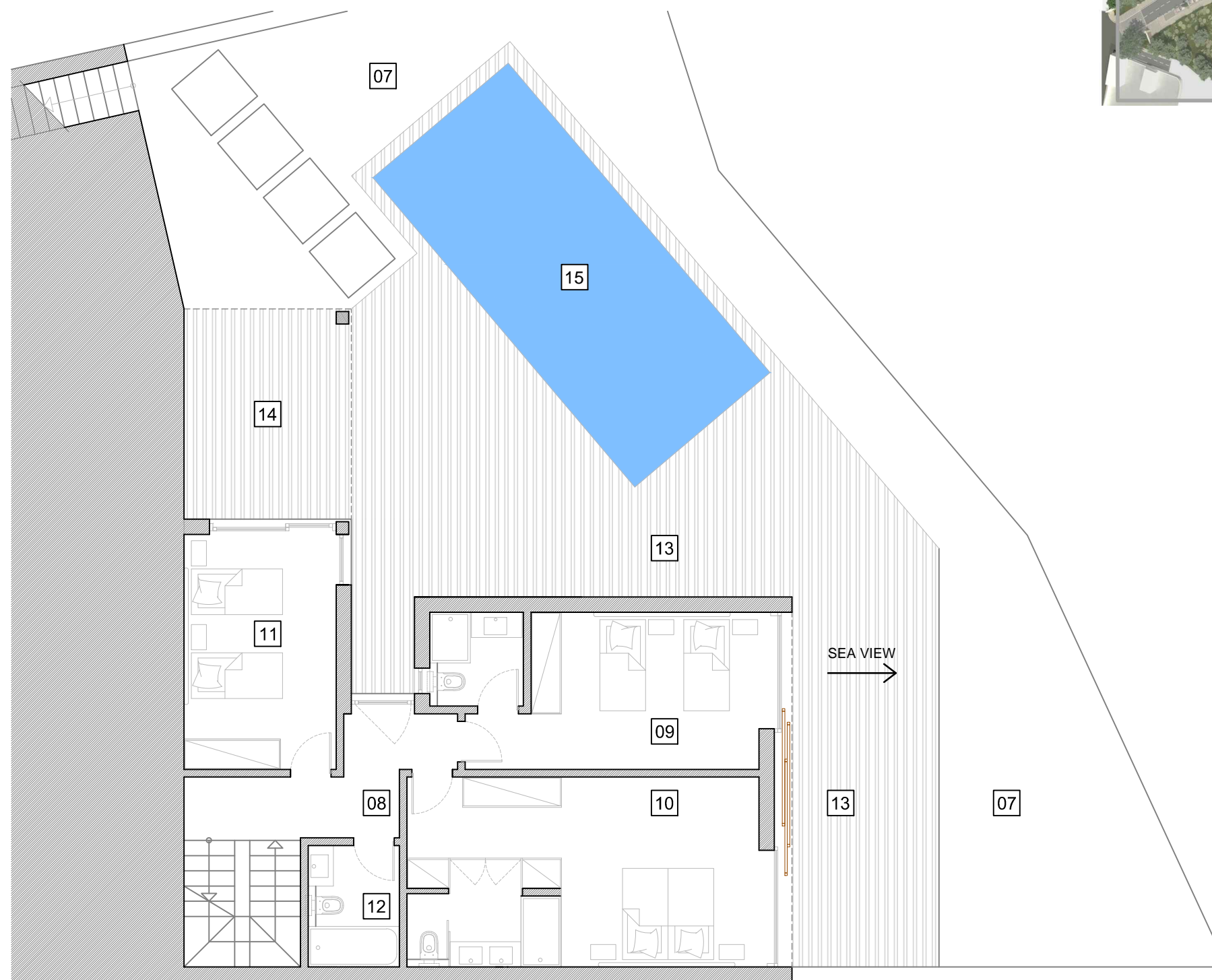
01	Entrance Terrace	13.45 m2	07	Gardens	171.6 m2	13	Terraces	71.5 m2
02	Living Room	43.4 m2	08	Hall	8.0 m2	14	Covered Terrace	13 m2
03	Kitchen	15.3 m2	09	Bedroom	19.8 m2	15	Pool	28 m2
04	Restroom	2.3 m2	10	Bedroom	26.4 m2			
05	Terraces	50.60 m2	11	Bedroom	14.2 m2			
06	Car Parking	34.1 m2	12	Bathroom	4.3 m2			

**Summary (all levels)**

Plot Area	440 m <sup>2</sup>
Covered Area (council area)	148.95 m <sup>2</sup>
Covered Area (all levels)	183.05 m <sup>2</sup>
All Terraces & Pool	176.5 m <sup>2</sup>
Gross Area	359.55 m <sup>2</sup>

Measurements are approximate

# Phase 2 : Villa C



Level 0

## heights II PERALTA

01	Entrance Terrace	13.45 m2	07	Gardens	171.6 m2	13	Terraces	71.5 m2
02	Living Room	43.4 m2	08	Hall	8.0 m2	14	Covered Terrace	13 m2
03	Kitchen	15.3 m2	09	Bedroom	19.8 m2	15	Pool	28 m2
04	Restroom	2.3 m2	10	Bedroom	26.4 m2			
05	Terraces	50.60 m2	11	Bedroom	14.2 m2			
06	Car Parking	34.1 m2	12	Bathroom	4.3 m2			

**Summary**  
(all levels)

Plot Area	440 m <sup>2</sup>
Covered Area (council area)	148.95 m <sup>2</sup>
Covered Area (all levels)	183.05 m <sup>2</sup>
All Terraces & Pool	176.5 m <sup>2</sup>
Gross Area	359.55 m <sup>2</sup>

Measurements are approximate