

Phase 2 : Villa 4C



Level 2

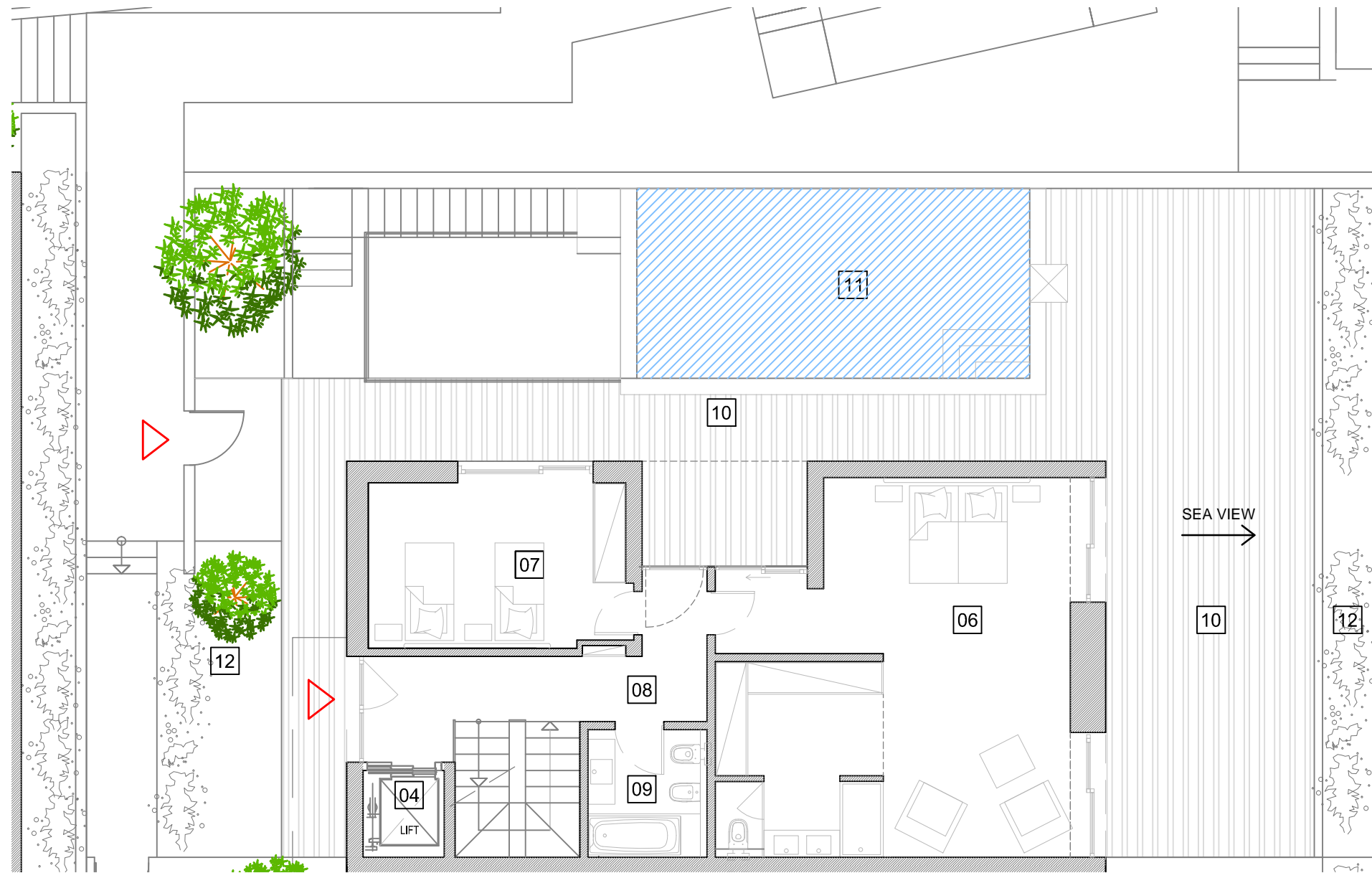
heights II
PERALTA

01	Balcony	2.6m2	07	Bedroom	14.6 m2	13	Gymnasium	38.4 m2
02	Living Room	41.6 m2	08	Hall	10.8 m2	14	Garage	40.5 m2
03	Kitchen	15.3 m2	09	Bathroom	5.1 m2	15	Bathroom	4.2 m2
04	Lift		10	Terraces	111.3 m2	16	Laundry	5 m2
05	Terrace	35.15 m2	11	Pool	28 m2	17	Terrace	23.4 m2
06	Suite	42 m2	12	Gardens	23,85 m2			

Summary
(all levels)

Plot Area	288 m ²
Covered Area (council area)	151.85 m ²
Covered Area (all levels)	253.55 m ²
All Terraces & Pool	200.5 m ²
Gross Area	454.05 m ²

Phase 2 : Villa 4C



Level 1

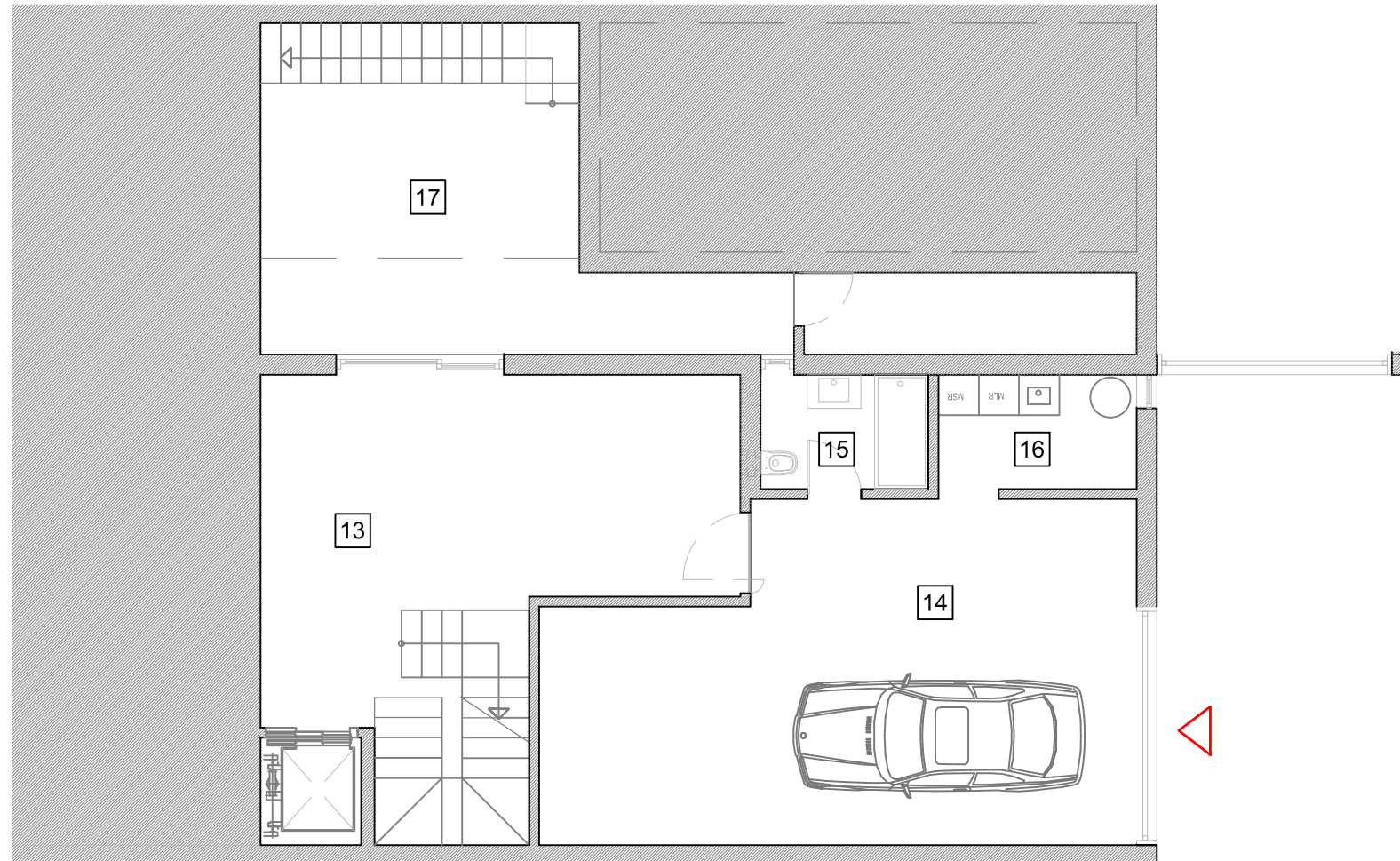
heights II
PERALTA

01	Balcony	2.6m2	07	Bedroom	14.6 m2	13	Gymnasium	38.4 m2
02	Living Room	41.6 m2	08	Hall	10.8 m2	14	Garage	40.5 m2
03	Kitchen	15.3 m2	09	Bathroom	5.1 m2	15	Bathroom	4.2 m2
04	Lift		10	Terraces	111.3 m2	16	Laundry	5 m2
05	Terrace	35.15 m2	11	Pool	28 m2	17	Terrace	23.4 m2
06	Suite	42 m2	12	Gardens	23,85 m2			

Summary
(all levels)

Plot Area	288 m ²
Covered Area (council area)	151.85 m ²
Covered Area (all levels)	253.55 m ²
All Terraces & Pool	200.5 m ²
Gross Area	454.05 m ²

Phase 2 : Villa 4C



Level 0

heights II
PERALTA

01	Balcony	2.6m2	07	Bedroom	14.6 m2	13	Gymnasium	38.4 m2
02	Living Room	41.6 m2	08	Hall	10.8 m2	14	Garage	40.5 m2
03	Kitchen	15.3 m2	09	Bathroom	5.1 m2	15	Bathroom	4.2 m2
04	Lift		10	Terraces	111.3 m2	16	Laundry	5 m2
05	Terrace	35.15 m2	11	Pool	28 m2	17	Terrace	23.4 m2
06	Suite	42 m2	12	Gardens	23,85 m2			

Summary	
(all levels)	
Plot Area	288 m ²
Covered Area (council area)	151.85 m ²
Covered Area (all levels)	253.55 m ²
All Terraces & Pool	200.5 m ²
Gross Area	454.05 m ²