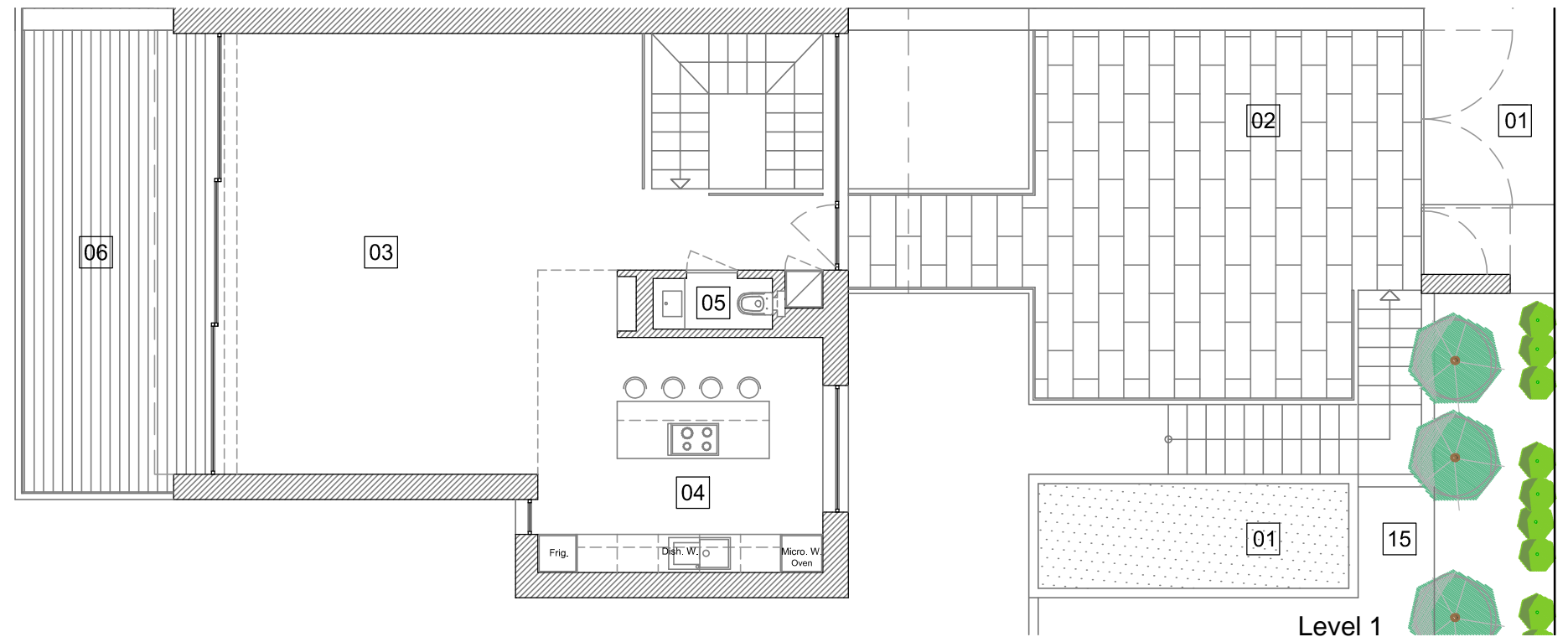


Unit A - Floor Plans



Heights 3
PERALTA

| | | | | | | | | |
|----|------------------------------|----------|----|--------------|----------|----|----------|-----------|
| 01 | Entrance + Exterior Covering | 28.40 m2 | 06 | Terrace | 22.60 m2 | 11 | Laundry | 2.80 m2 |
| 02 | Parking Terrace | 39.60 m2 | 07 | Hall | 14.60 m2 | 12 | Storage | 5.30 m2 |
| 03 | Living Room | 49.20 m2 | 08 | Master Suite | 33.10 m2 | 13 | Terraces | 61.30 m2 |
| 04 | Kitchen | 14.00 m2 | 09 | Suite | 21.70 m2 | 14 | Pool | 24.50 m2 |
| 05 | Bathroom | 1.50 m2 | 10 | Suite | 28.25 m2 | 15 | Garden | 167.00 m2 |

Summary (all levels)

| | |
|---------------------------|-----------|
| Plot Area | 414.60 m2 |
| Covered Area (all levels) | 213.20 m2 |
| Entrance Terraces & Pool | 176.40 m2 |
| Gross Built Area | 389.60 m2 |
| Garden | 167.00 m2 |

Measurements are approximate