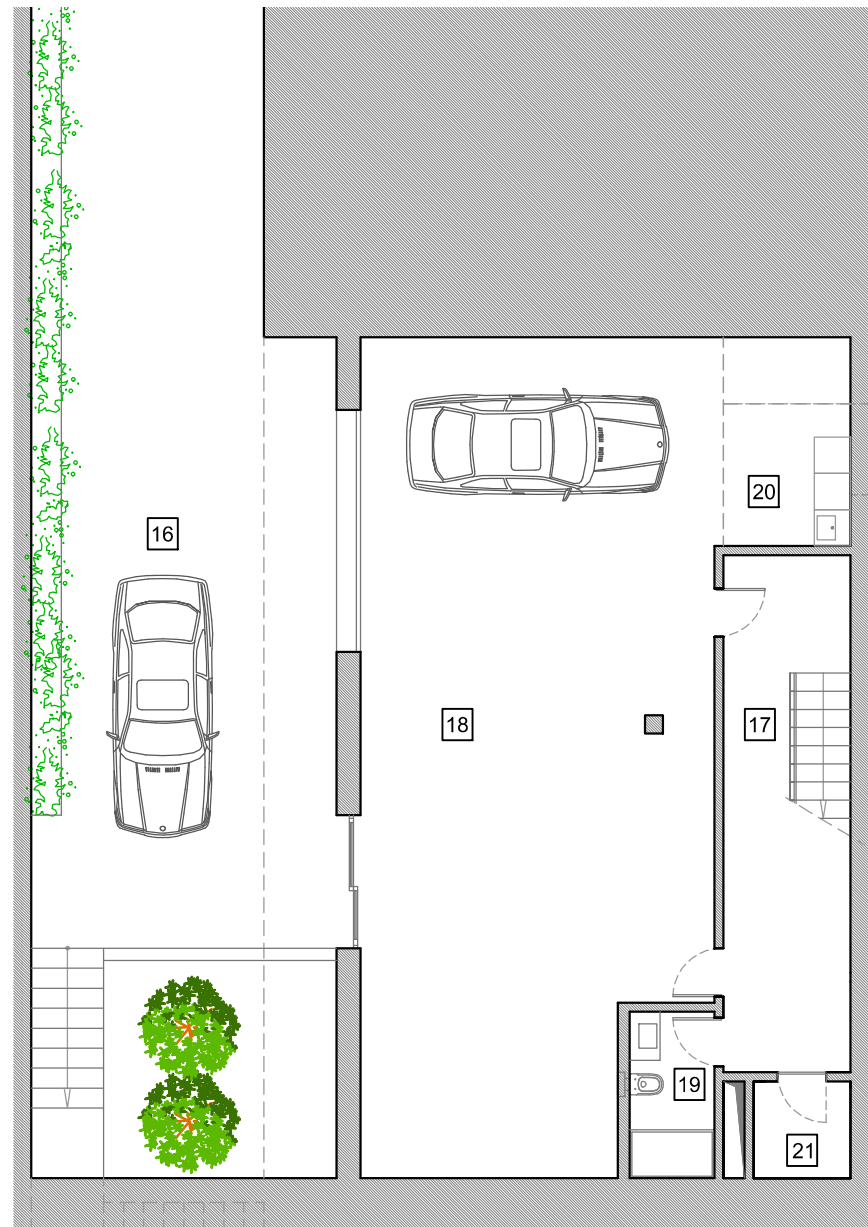


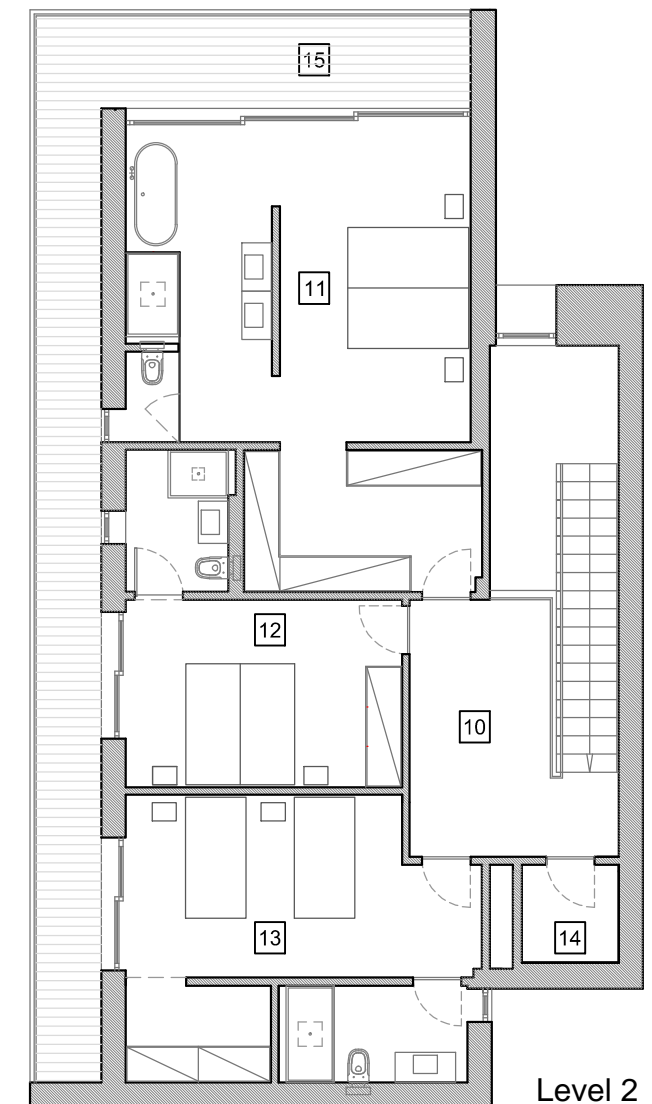
Villa 4



Level 0



Level 1



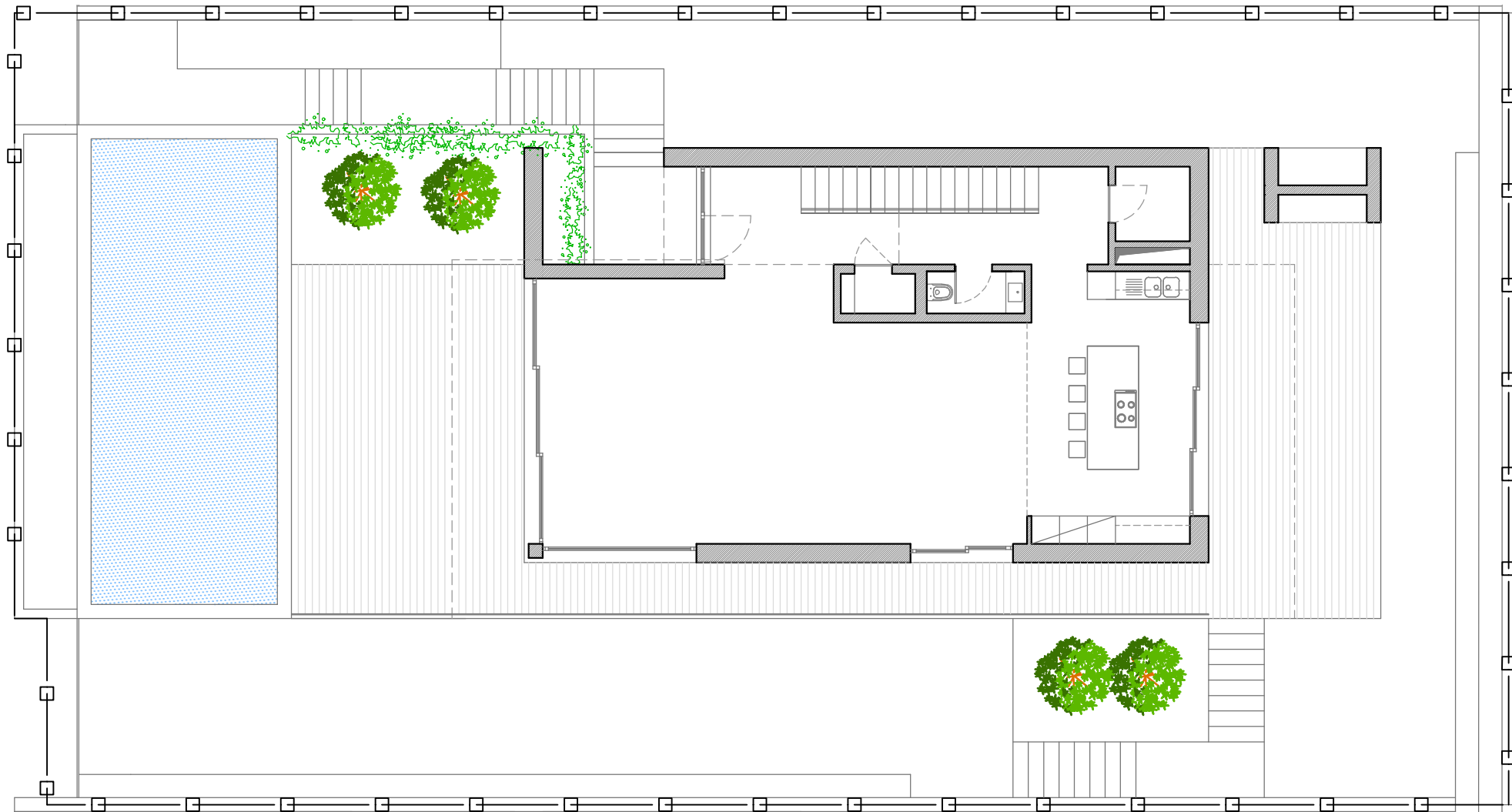
Level 2

Heights 3 PERALTA

01	Entrance Hall	18.0 m2	08	Pool	40.0 m2	15	Terrace	32.8 m2
02	Living Room	56.0 m2	09	Gardens	164.8 m2	16	Courtyard	89.9 m2
03	Kitchen	20.4 m2	10	Hall	11.9 m2	17	Circulation	12.8 m2
04	Storage	2.60 m2	11	Master Suite	39.6 m2	18	Garage	77.0 m2
05	Bathroom	1.90 m2	12	Suite	18.4 m2	19	Bathroom	3.9 m2
06	Closet	1.40 m2	13	Suite	26.0 m2	20	Laundry	7.7 m2
07	Terraces	94,7 m2	14	Storage	2.6 m2	21	Storage	2.6 m2

Summary (all levels)	
Plot Area	542.9 m2
Covered Area (council area)	250.0 m2
Covered Area (all levels)	285.0 m2
All Terraces, Patio & Pool	257.4 m2
Gross Built Area	542.4 m2
Garden	164.8 m2

Plot 4 + Villa Implantation



Plot

Heights 3 PERALTA

Summary (all levels)		
Plot Area	□—□—□—□	542.9 m ²
Covered Area (council area)	250.0 m ²
Covered Area (all levels)	285.0 m ²
All Terraces, Patio & Pool	257.4 m ²
Gross Built Area	542.4 m ²
Garden	164.8 m ²

Measurements are approximate