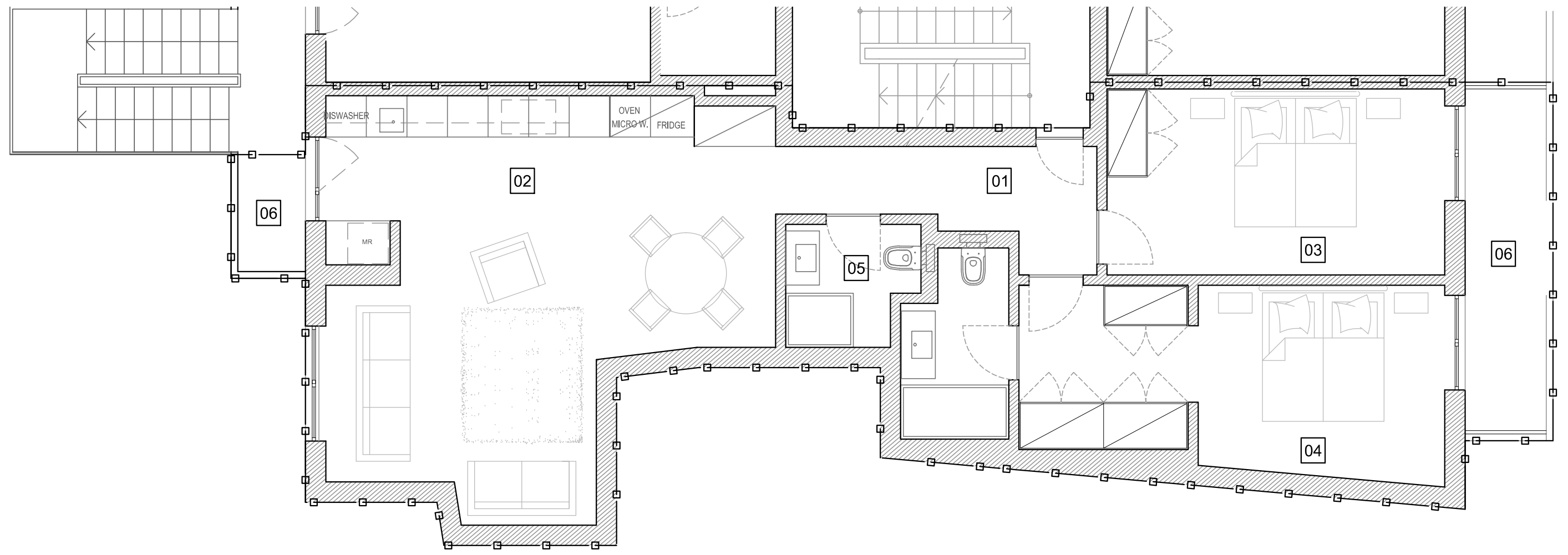


APARTMENT - C



JLM 45
Lourinhã . T2

First Floor

01	Entrance Hall	6.1 m2
02	Living Room/ Kitchen	33.5m2
03	Bedroom	13.7 m2
04	Bedroom	20.8 m2
05	Bathroom	3.3 m2

06	Balcony	8.8 m2
	Storage attic	11 m2
	Outdoor Parking	12.5 m2

Summary (all levels)

Private Area	—□—□—□—□—	103.6 m2
Apartment Enclosed Area	94.7 m2
Storage & Parking	23.5 m2
Gross Built Area	127 m2
Council Area	103.3 m2

Measurements are approximate