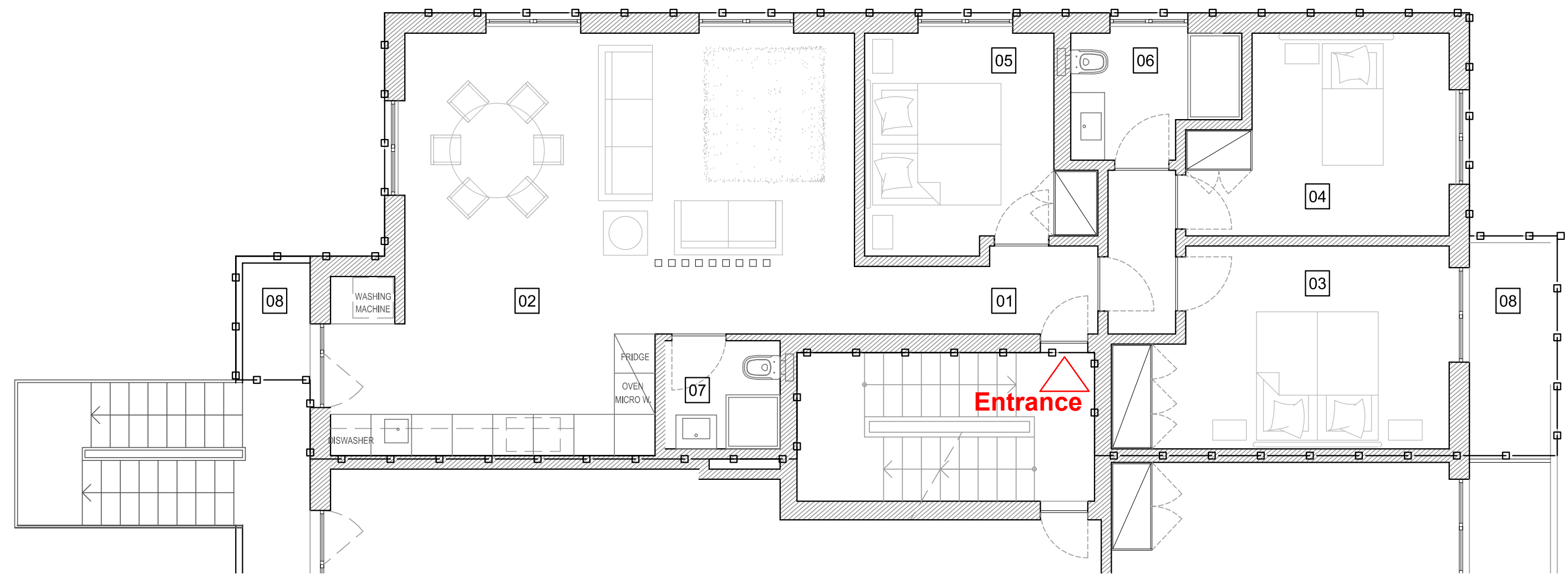


APARTMENT - F



JLM 45
Lourinhã . T3

First Floor

01	Entrance Hall	6.7 m2	06	Bathroom	4.1 m2
02	Living Room/ Kitchen	38.7 m2	07	Bathroom	2.7 m2
03	Bedroom	13.4 m2	08	Balcony	6.3 m2
04	Bedroom	10.3 m2		Storage attic	15 m2
05	Bedroom	9.5 m2		Outdoor parking	12.5 m2

Summary (all levels)

Private Area	—□—□—□—□	108.3 m2
Apartment Enclosed Area	102.0 m2
Storage & Parking	27.5 m2
Gross Built Area	135.8 m2
Council Area	105.7 m2

Measurements are approximate